

Double Degree in Management of Educational Services, Adult and Continuing Education



© Professorship for Adult and Continuing Education

#IntMasterWue

Why study the Double Degree Programme?

- At least one semester at the University of Padua, one of the oldest and most beautiful university cities in Europe
- Expansion of national and international career perspectives
- Two Master's degrees (120 ECTS)
 1. Laurea Magistrale in Management dei servizi educativi e formazione continua
 2. Master of Arts in Educational Science



All rights reserved.

Julius-Maximilians-Universität Würzburg

Institute for Education

Professorship for Adult and Continuing Education

Oswald-Külpe-Weg 82

97074 Würzburg, GERMANY

Tel.: +49 931-31 85226

master-education@uni-wuerzburg.de

<https://go.uniwue.de/doubledegree>



© Universität Würzburg



@ebwuerzburg



„Professional network for adult
education and lifelong learning“



@EBWuerzburg

The study course at a glance



Study plan



Application and admission



Target groups

Students and practitioners from the field of (adult) education and lifelong learning.



Start of studies:

October (winter term)



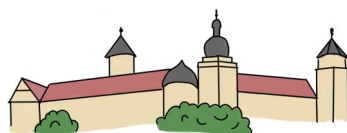
Standard duration: 4 semesters
Maximum duration: 6 semesters



Tuition fee per semester:
approx. 163€,
includes public transport ticket



Possible locations:
Würzburg, Padua, digital



1. Semester (October — February) in Würzburg

- Media education in an international perspective (5 ECTS)
- Lifelong learning: international perspectives and policies (5 ECTS)
- International learning project (10 ECTS)
- Contexts and Theories of Adult and Continuing Education (10 ECTS)

2. Semester (February — June) in Padua or Würzburg

- Organisational Culture. Teaching and Learning Methods (6 ECTS)
- Global Cultural Pluralism in Organisations (6 ECTS)
- Foundations of Coaching for Organisational Effectiveness (9 ECTS)
- Education for Inclusive Employability and Well-Being in Work Life or Personnel Selection in Organization and Employee Performance: Challenges and Opportunities (9 ECTS)

3. Semester (October — February) in Würzburg

- Educational Management (5 ECTS)
- International-Comparative Adult and Continuing Education (15 ECTS)
- Adult and Continuing Education as Educational Field of Action (10 ECTS)

4. Semester in Würzburg or Padua

- Master's Thesis (30 ECTS)
 - Possible areas: General education, empirical educational research, (international) adult education/continuing education

Application period

- February — 15.07. each year
- via **WueStudy**



Requirements:

- Bachelor's degree (180 ECTS) in education or a comparable field of study
- Basic pedagogical knowledge (40 ECTS) in four areas:
 - Fundamentals of educational theory
 - Advanced educational theory
 - Historical pedagogy
 - Empirical Research Methods and Empirical Educational Research
- English B2
- Visa for non-EU-students

