

Adult Education Academy

for master's students, doctoral students and practitioners

International and comparative studies
in adult education and lifelong learning



02 - 13 February 2026

in Würzburg/Bavaria, Germany

+ Preparatory Phase Nov. 2025 - Jan. 2026

In cooperation with



PÉCSI TUDOMÁNYEGYETEM
UNIVERSITY OF PÉCS

University of Pécs - Hungary



Bayero University Kano -
Nigeria



Helmut Schmidt University
of Hamburg - Germany



University of Belgrade -
Serbia



University of Ljubljana -
Slovenia



University of Florence - Italy



University of Padua - Italy



University of Minho -
Portugal



International Institute of
Adult and Lifelong
Education - India



University of Lisbon -
Portugal



DVV International



European Association for the
Education of Adults



University of Duisburg-Essen
- Germany



University of Lagos - Nigeria



Delhi University - India



Age-it. Ageing well in an
ageing society



University of Sarajevo -
Bosnia and Herzegovina



University of British
Columbia - Canada



Texas State University -
United States



West Liberty University -
United States

With financial support from



Index

Structure of the Adult Education Academy.....	04
Key.....	06
Travel and Venue.....	07
Week one, 02 - 06 February 2026.....	08
First week, 02 - 06 February 2026	
Option 1: International strategies in adult education	09
Option 2: Paulo Freire, adult and permanent education	14
The moderators and lectures of week one.....	17
Week two, 09 - 13 February 2026.....	18
Second week, 09 - 13 February 2026	
Comparative studies in adult education and lifelong learning	18
Comparative groups overview	22
Comparative groups moderators	23
How to get to the Neubaukirche	31
Certification and follow-up	33
Join us on social media.....	34
JMU platforms	35
Team of the Adult Education Academy	36

Structure of the Adult Education Academy

Since 2014, the Adult Education Academy promotes international networks in adult education and lifelong learning, aiming to foster a connection between academic learning and the field of adult education.

During the preparatory phase and the two-week intensive programme, participants develop and refine their analytical and comparative skills in adult education in an international environment. They gain an understanding of internationally relevant educational policies in the context of lifelong learning, while strengthening their communication, teambuilding and critical thinking skills by working together in this international setting.

Target groups

Master's and doctoral students in adult education, as well as colleagues from the field of adult education and lifelong learning (hereafter "practitioners") are invited to join the Adult Education Academy in Würzburg. Practitioners should have experiences in adult education (e.g. teaching, programme planning, management in institutions of adult education associations). As a minimum requirement, all participants should hold a bachelor's degree (or equivalent) in a subject related to adult and lifelong learning.

Structure

The Adult Education Academy is divided into an (1) online preparatory phase, (2) a two-week intensive programme featuring (2.1) the first week 02-06 February 2026 & (2.2) the second week from 09-13 February 2026 and (3) an optional follow-up. The two-week intensive programme will be organised online and on campus in Würzburg.

Phase	Preparation <i>online</i>	Week I <i>in Würzburg/online</i>		Week II <i>in Würzburg/online</i>	Follow-up <i>online</i>
Topic	Online preparatory phase	International strategies in adult education	Paulo Freire, adult and permanent education	Comparing lifelong learning	Publication option
Activities	<div>Online tutorial</div> <div>Preparatory readings</div> <div>Transnational essay & good practice presentation</div> <div>Employability in adult education</div>	<div>Classes on educational policies, adult education in Germany, analysis of models</div> <div>Readings and theoretical discussion on Paulo Freire</div> <div>Joint field visits and discussions with stakeholders<ul style="list-style-type: none">field visits to German providers of adult and continuing educationdiscussions with international stakeholders in adult education and lifelong learning</div> <div>Reflection and role play: theory and practice observations</div> <div>Reflection: theory and field visit observations</div>	<div>Introduction to comparative adult education</div> <div>Comparative group work on thirteen different topics</div> <div>Open space presentations</div>	<div>Joint comparative research papers together with comparative group moderators</div>	
Selection options by target groups	All master's students All doctoral students & practitioner	Option 1: „International strategies in adult education“: for master's students and practitioners, selection option for doctoral students Option 2: „Paulo Freire, adult and permanent education“: selection option for doctoral students		Choose one out of the thirteen topics for the comparative groups to work on in week II	Optional for doctoral students and practitioners



Preparatory phase

The preparatory phase is essential for participation in the Adult Education Academy. It provides participants with the necessary knowledge and abilities for the two-week Adult Education Academy programme in February 2026. The preparatory phase, which begins in November 2025 and ends in January 2026, can be divided into three parts. During the first part, participants are divided into two groups: one consisting of master's students and practitioners and another consisting of doctoral students. The master's students and practitioners will address the topic "International strategies in adult education", whereas the doctoral students can decide whether they want to join the same group or rather work on the topic "Paulo Freire, adult and permanent education". The second part takes place within the comparative groups. Last but not least, the third part addresses employability in adult education.

The preparation will take place online. Materials provided during this phase include an online tutorial, readings and group sessions for discussions. At the end of the preparatory phase, master's and doctoral students submit a transnational essay; practitioners submit a good practice presentation. The topics of the essays will depend on the comparative groups chosen by the participants. Central to the successful completion of the Adult Education Academy is the active cooperation and independent preparation of the contents and materials in the preparation phase by the participants for the two-week intensive programme in February.



Week I

The group "International policies in adult education and lifelong learning" (for master's and doctoral students as well as practitioners) will focus on a critical reflection of current education policies based on a theoretical model developed by Lima/Guimarães.

The option "Paulo Freire, adult and permanent education" (for doctoral students) is based on readings and discussions of selected texts by Paulo Freire.

During the first week of the Adult Education Academy, doctoral students have the opportunity to take a class on Paulo Freire's theories for "adult and permanent education". This class is based on readings and discussions of selected texts by Paulo Freire. The doctoral students will develop a theoretical-analytical perspective and will focus on more specialised theoretical knowledge to be able to synthesise different perspectives systematically and theoretically. If they prefer, doctoral students may also join the master's students and practitioners in the class on "International strategies in adult education".

The theoretical insights in both groups (International policies in adult education and lifelong learning & Paulo Freire, adult and permanent education) will be accompanied by field visits to adult education providers in and around Würzburg. Furthermore, presentations of international adult education associations (European Association for the Education of Adults, International Council in Adult Education, DVV International, UNESCO Institute for Lifelong Learning) are organised to serve as case studies for practicing the analytical models or the theories discussed in the two classes.



Week II

During the second week, the participants will work in comparative groups divided by thirteen different topics in adult education and lifelong learning. Participants will choose the topic of their transnational essay based on the focus of the comparative group they will be assigned to prior to the Academy. On the last day of the Adult Education Academy, the results of the comparisons will be presented to all other groups.



Certification and follow-up

After participating fully in the Adult Education Academy and submitting either a transnational essay or a good practice presentation, all participants receive a participation appreciation. In addition, there are two possibilities for enrolled students to receive ECTS credits. For more information, see page 33.

Doctoral students, practitioners and Master students have the possibility to get guidance for publishing a joint comparative paper after the Adult Education Academy.

Key

Groups of people



Master Students



Doctoral Students

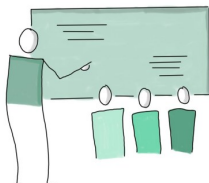


Practitioners

#AEAcademy phases



Preparatory phase



Week I



Week II

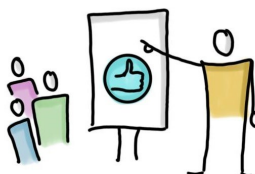


Certification & Follow-up

Activities



Field visit



Good practice presentation



Comparative group presentation

Travel and Venue

Building Z6, Hubland South (Zentrales Hörsaal- und Seminargebäude)

Address:

Zentrales Hörsaal- und
Seminargebäude der
Julius-Maximilians-
Universität Würzburg (Z6)
97074 Würzburg



Option 1: Bus 14 from „Hauptbahnhof ZOB“ to „Campusbrücke“

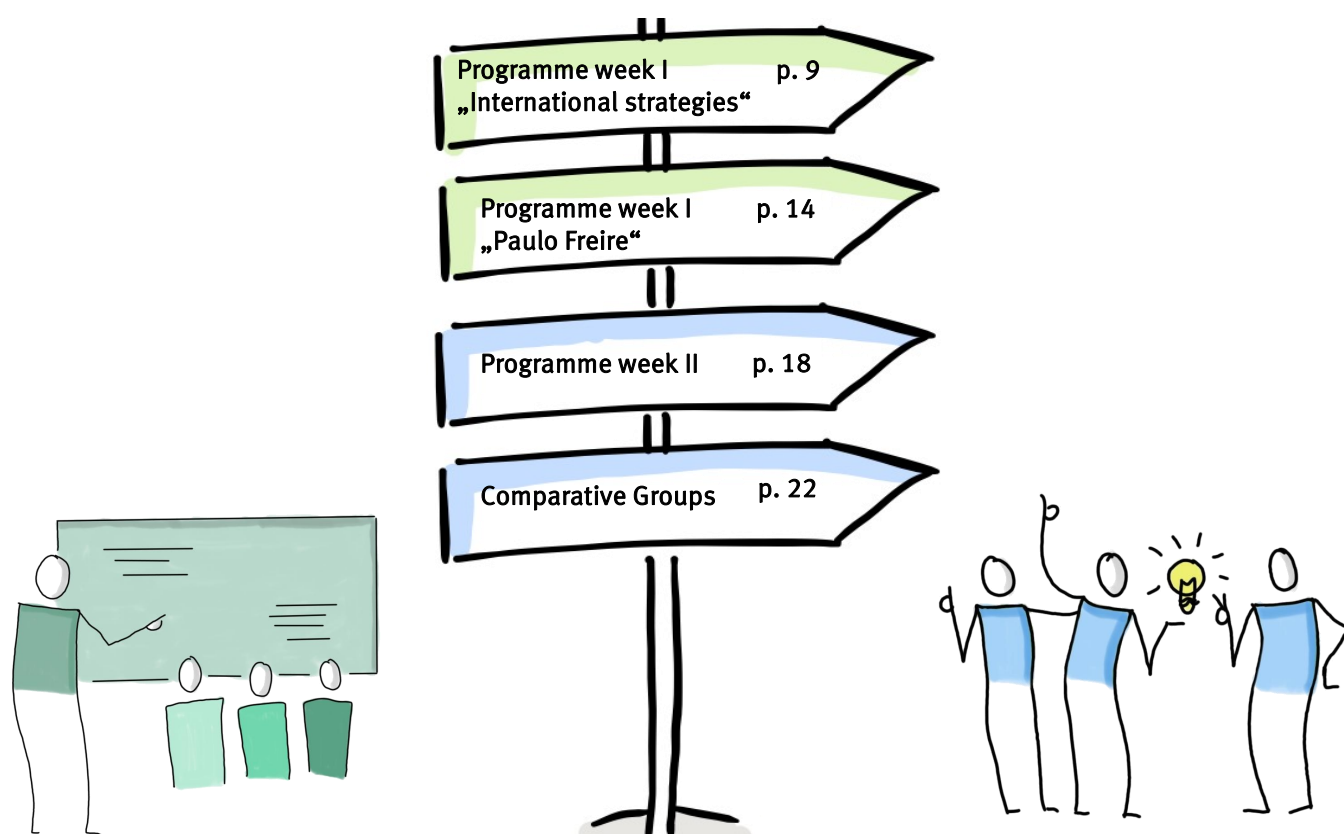
Option 2: Bus 114 from „Barbarossaplatz“ to „Philosophische Fakultät“ followed by an about 5 minute walk to the building Z6

Option 3: Bus 214 from „Hauptbahnhof ZOB“ to „Philosophische Fakultät“ followed by an about 5 minute walk to the building Z6

Option 4: Bus 10 from „Sanderglaxisstraße“ to „Universitätsbibliothek“ or „Campusbrücke“

Programme of the Adult Education Academy

02 - 13 February 2026



Phase	Week I in Würzburg		Week II in Würzburg
Topic	International strategies in adult education	Paulo Freire, adult and permanent education	Comparing lifelong learning
Activities	Classes on educational policies, adult education in Germany, analysis of models	Readings and theoretical discussion on Paulo Freire	Introduction to comparative adult education
	Joint field visits and discussions with stakeholders <ul style="list-style-type: none"> field visits to German providers of adult and continuing education discussions with international stakeholders in adult education and lifelong learning 	Reflection and role play: theory and practice observations	Comparative group work on thirteen different topics
Selection options by target groups	Option 1: „International strategies in adult education“: for master's students and practitioners, selection option for doctoral students	Reflection: theory and field visit observations	Open space presentations
	Option 2: „Paulo Freire, adult and permanent education“: selection option for doctoral students		Choose one out of the thirteen topics for the comparative groups to work on in week II

Week I: International strategies in adult education



Master's students, doctoral students and practitioners working on "International strategies in adult education and life-long learning" in the first week of the Adult Education Academy will use a policy analysis perspective. This perspective will enhance their analytical skills by integrating and analysing different perspectives. The theoretical analysis perspective is accompanied by field visits to adult education providers in and around Würzburg. Presentations of international adult education organisations (EAEA, ICAE, UIL, DVV International) will complete the programme. These insights will be applied to the analytical models as case studies.

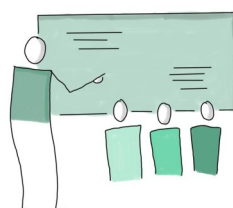
Participants who choose this topic will be divided in four groups. These group arrangements are not identical to the comparative groups. Each group will be assigned a course room. Prof. Egetenmeyer, Prof. Vicente, Prof. Košmerl, Prof. Alves and Prof. Guimarães will be rotating to lead the groups.

Room overview for the Groups of international strategies in adult education

Strategies Group A Room: Z6, 2.011	Strategies Group B Room: Z6, 2.012
Strategies Group C Room: Z6, 2.002	Strategies Group D Room: Z6, 1.005 hybrid
AEA-Team Office Room: Z6, 2.010	

Monday, 2 February 2026

			Room
8.00-9.00	Registration		Z6, 1.012
9.00-10.30	Introduction and welcoming address	PROF. EGETENMEYER PROF. SPERLICH	Z6, 1.012
10.30-10.45	<i>Coffee break</i>		
10.45-12.15	Get to know each other	SAAM BOGDANOVIĆ SCHIFFNER	Z6, 1.012
12.15-13.45	<i>Lunch break</i>		
13.45-15.15	Plenary lecture: The politicity of education: politics, policies, strategies— Introducing Paulo Neves Reglus Freire (1921-1997): Biography and bibliography	PROF. LIMA	Z6, 1.012
15.15-15.30	<i>Coffee break</i>		
15.30-17.00	Plenary lecture: The politicity of education: politics, policies, strategies— Introducing Paulo Neves Reglus Freire (1921-1997): Biography and bibliography	PROF. LIMA	Z6, 1.012
18.00	Guided City Tour <i>Meeting point: Z6 2nd floor at 17.15 in front of the AEA-Office</i>		



Week I: International strategies in adult education



Tuesday, 3 February 2026

			Room
9.00-10.30	Group A: Levels of an analysis: “Mega, macro, meso and micro”	PROF. VICENTE	Z6, 2.011
	Group B: Confintea, the UN system and adult learning	PROF. TUCKETT	Z6, 2.012
	Group C: Social policy models	PROF. KOŠMERL	Z6, 2.002
	Group D: Adult education providers in Germany	PROF. EGETENMEYER	Z6, 1.005
10.30-10.45	<i>Coffee break</i>		
10.45-12.15	Group A: Levels of an analysis: “Mega, macro, meso and micro”	PROF. VICENTE	Z6, 2.011
	Group B: Preparation for field visits	PROF. ALVES/PROF. GUIMARÃES	Z6, 2.012
	Group C: Social policy models	PROF. KOŠMERL	Z6, 2.002
	Group D: Adult education providers in Germany	PROF. EGETENMEYER	Z6, 1.005
12.15-13.45	<i>Lunch break</i>		
13.45-15.15	Group A: Social policy models	PROF. ALVES/PROF. GUIMARÃES	Z6, 2.011
	Group B: Adult education providers in Germany	PROF. EGETENMEYER	Z6, 2.012
	Group C: Levels of an analysis: “Mega, macro, meso and micro”	PROF. VICENTE	Z6, 2.002
	Group D: Social policy models	PROF. KOŠMERL	Z6, 1.005
15.15-15.30	<i>Coffee break</i>		
15.30-17.00	Group A: Social policy models	PROF. ALVES/PROF. GUIMARÃES	Z6, 2.011
	Group B: Adult education providers in Germany	PROF. EGETENMEYER	Z6, 2.012
	Group C: Levels of an analysis: “Mega, macro, meso and micro”	PROF. VICENTE	Z6, 2.002
	Group D: Social policy models	PROF. KOŠMERL	Z6, 1.005



Week I: International strategies in adult education



Wednesday, 4 February 2026

			Room
9.00-10.30	Group A: Preparation for field visits	PROF. ALVES/PROF. GUIMARÃES	Z6, 2.011
	Group B: Social policy models	PROF. KOŠMERL	Z6, 2.012
	Group C: Adult education providers in Germany	DR. SCHWARZ	Z6, 2.002
	Group D: Confintea, the UN system and adult learning	PROF. TUCKETT	Z6, 1.005
10.30-10.45	<i>Coffee break</i>		
10.45-12.15	Group A: Adult education providers in Germany	PROF. EGETENMEYER	Z6, 2.011
	Group B: Social policy models	PROF. KOŠMERL	Z6, 2.012
	Group C: Adult education providers in Germany	DR. SCHWARZ	Z6, 2.002
	Group D: Peace, Citizenship and Sustainable Development. Global Recommendations for Adult Education and Lifelong Learning	PROF. HINZEN	Z6, 1.005
12.15-13.15	<i>Lunch break</i>		
13.15-14.45	Group A: Adult education providers in Germany	PROF. EGETENMEYER	Z6, 2.011
	Group B: Peace, Citizenship and Sustainable Development. Global Recommendations for Adult Education and Lifelong Learning	PROF. HINZEN	Z6, 2.012
	Group C: Preparation for field visits	PROF. ALVES	Z6, 2.002
	Group D: Preparation for field visits	PROF. GUIMARÃES	Z6, 1.005
14.45-15.30	<ul style="list-style-type: none"> To Volkshochschule: bus ride with the bus 214 from the bus stop "Philosophische Fakultät" to "Barbarossaplatz" at 14:59 To IHK: bus ride with bus 7 from the bus stop "Universitätszentrum" to "Mainauwiesen" at 15:01 To Robert Kümmert-Academy: bus ride with bus 10 from the bus stop "Campusbrücke" to "Sanderring" at 14:51. Then tram 5 to "Wiener Ring" at 15:12 To Kolping Academy: bus ride with the bus 14 from the bus stop "Campusbrücke" to "Stift Haug" at 14:45 To Jugendbildungsstätte: bus ride with bus 34 from the bus stop "Campusbrücke" to "Reuterstraße" at 14:44. Then tram 5 to "Athener Ring" at 15:11 		
15.30-17.30	Field visits to providers of adult and continuing education in Würzburg		
	● Volkshochschule (Adult Education Centre) Würzburg and Surroundings e.V. Meeting point: Z6 2 nd floor in front of the balcony at 14.50	CARACCIOLI	hybrid
	● Chamber of Industry and Commerce (IHK), Würzburg-Schweinfurt Meeting point: Z6 2 nd floor in front of the AEA-Office at 14.50	BOGDANOVIĆ	
	● Robert-Kümmert-Academy, Würzburg Meeting point: Z6 2 nd floor in AEA-Office at 14.50	PROF. EGETENMEYER	
	● Kolping-Academy, Würzburg Meeting point: Z6 1 st floor next to the stairs at 14.50	SAAM	
	● Jugendbildungsstätte Unterfranken, Würzburg Meeting point: Z6 ground floor next to the stairs at 14.50	TROIDL	

Week I: International strategies in adult education



Thursday, 5 February 2026

Room

9.00-10.15	Group A: Confintea, the UN system and adult learning	PROF. TUCKETT	Z6, 2.011
	Group B: Levels of an analysis: “Mega, macro, meso and micro”	PROF. ALVES/PROF. GUIMARÃES	Z6, 2.012
	Group C: Peace, Citizenship and Sustainable Development. Global Recommendations for Adult Education and Lifelong Learning	PROF. HINZEN	Z6, 2.002
	Group D: Levels of an analysis: “Mega, macro, meso and micro”	PROF. VINCENTE	Z6, 1.005
10.15-10.30	<i>Coffee break</i>		
10.30-11.45	Group A: Peace, Citizenship and Sustainable Development. Global Recommendations for Adult Education and Lifelong Learning	PROF. HINZEN	Z6, 2.011
	Group B: Levels of an analysis: “Mega, macro, meso and micro”	PROF. ALVES/PROF. GUIMARÃES	Z6, 2.012
	Group C: Confintea, the UN system and adult learning	PROF. TUCKETT	Z6, 2.002
	Group D: Levels of an analysis: “Mega, macro, meso and micro”	PROF. VINCENTE	Z6, 1.005
12.00-14.00	<i>Lunch break & travel to field visits</i>		
14.30-16.00	Field visits to adult education providers beyond Würzburg		
	● Catholic Adult Education (KEB), Frankfurt am Main Meeting point: Z6 2 nd floor in front of the balcony at 12.00	BOGDANOVIĆ	
	● Volkshochschule (Adult Education Centre), Frankfurt am Main Meeting point: Z6 2 nd floor in AEA-Office at 12.00	PROF. EGETENMEYER	hybrid
	● Police Training and Education Centre, Bamberg Meeting point: Z6 1 st floor next to the stairs at 12.00	SAAM	
15.30-17.00	● Deutsche Bahn (German railway), Frankfurt am Main Meeting point: Z6 2 nd floor in front of the AEA-Office at 12.00	CARACCIOLI	
	● Walter-Kolb-Stiftung, Frankfurt am Main Meeting point: Z6 ground floor next to the stairs at 12.00	SCHIFFNER	
16.15 or 17.15	Travel back to Würzburg		
	(Those who wish to remain in the field visit city will return to Würzburg independently)		

Week I: International strategies in adult education



Friday, 6 February 2026

Room





9.00-10.30	Group A: Role play: Social policy models and adult education practice	PROF. KOŠMERL	Z6, 2.011
	Group B: Role play: Social policy models and adult education practice	PROF. VICENTE	Z6, 2.012
	Group C: Role play: Social policy models and adult education practice	PROF. ALVES	Z6, 2.002
	Group D: Role play: Social policy models and adult education practice	PROF. GUIMARÃES	Z6, 1.005

10.30-10.45 *Coffee break*

10.45-12.15	Group A: Role play: Social policy models and adult education practice	PROF. KOŠMERL	Z6, 2.011
	Group B: Role play: Social policy models and adult education practice	PROF. VICENTE	Z6, 2.012
	Group C: Role play: Social policy models and adult education practice	PROF. ALVES	Z6, 2.002
	Group D: Role play: Social policy models and adult education practice	PROF. GUIMARÃES	Z6, 1.005

12.15-13.45 *Lunch break*

Field presentations to international adult and continuing education associations

13.45-15.15	 Esther Hirsch — The role of Adult Education in International Development Cooperation - Position and strategies of DVV International (DVV International)		Z6, 2.011
	 Gina Ebner — Herding cats: European advocacy for adult learning and education (EAEA)		Z6, 1.005 hybrid
	 Katarina Popović — Non-formal civic education: The example of Serbia (ICAE)		Z6, 2.002
	 Angela Owusu-Boampong — Adult Learning and Education monitoring systems (UIL)		Z6, 2.012

15.15-15.30 *Coffee break*

15.30-17.00	Group A: Reflection of field visits	PROF. KOŠMERL	Z6, 2.011
	Group B: Reflection of field visits	PROF. VICENTE	Z6, 2.012
	Group C: Reflection of field visits	PROF. ALVES	Z6, 2.002
	Group D: Reflection of field visits	PROF. GUIMARÃES	Z6, 1.005

Week I: Paulo Freire, adult and permanent education



In this heavily theory-based class for doctoral students, the participants focus on Paulo Freire's theories for international adult education. The participants will develop a theoretical-analytical perspective.

They will focus on much more specialised theoretical knowledge to be able to synthesise different perspectives systematically and theoretically. The theoretical insights during the first week are accompanied by field visits to adult education providers in and around Würzburg. Furthermore, presentations of international adult education associations are organised (e.g. EAEA, ICAE, UIL, DVV International).

Room overview for the Group Paulo Freire, adult and permanent education

Group Freire Room: Z6, 2.014	AEA-Team Office Room: Z6, 2.010
--------------------------------	-----------------------------------

Monday, 2 February 2026

			Room
8.00-9.00	Registration		Z6, 1.012
9.00-10.30	Introduction and welcoming address	PROF. EGETENMEYER	Z6, 1.012
10.30-10.45	Coffee break		
10.45-12.15	Get to know each other	SAAM SCHIFFNER BOGDANOVIĆ	Z6, 1.012
12.15-13.45	Lunch break		
13.45-15.15	Plenary lecture: The politicity of education: politics, policies, strategies— Introducing Paulo Neves Reglus Freire (1921-1997): Biography and bibliography	PROF. LIMA	Z6, 1.012
15.15-15.30	Coffee break		
15.30-17.00	Plenary lecture: The politicity of education: politics, policies, strategies— Introducing Paulo Neves Reglus Freire (1921-1997): Biography and bibliography	PROF. LIMA	Z6, 1.012
18.00	Guided City Tour <i>Meeting point: Z6 2nd floor at 17.15 in front of the AEA-Office</i>		

Tuesday, 3 February 2026

			Room
9.00-10.30	Why studying Freire today? The contributions of Freire to policy studies in ALE/LLL: critical encounters with Ettore Gelpi and Ivan Illich	PROF. LIMA	Z6, 2.014
10.30-10.45	Coffee break		
10.45-12.15	Why studying Freire today? The contributions of Freire to policy studies in ALE/LLL: critical encounters with Ettore Gelpi and Ivan Illich	PROF. LIMA	Z6, 2.014
12.15-13.45	Lunch break		
13.45-15.15	Revisiting the pedagogy of the oppressed to analyse adult learning and education	PROF. LIMA	Z6, 2.014
15.15-15.30	Coffee break		
15.30-17.00	Group work on Freire	PROF. LIMA	Z6, 2.014

Week I: Paulo Freire, adult and permanent education



Wednesday, 4 February 2026			Room
9.00-10.30	Adult education providers in Germany	PROF. EGETENMEYER	Z6, 2.014
10.30-10.45	<i>Coffee break</i>		
10.45-12.15	The opus magnum: the pedagogy of the oppressed and its main concepts. Radical democracy, liberation and participation; modernization and development. Extension or communication? Education as the practice of freedom.	PROF. LIMA	Z6, 2.014
12.15-13.15	<i>Lunch break</i>		
13.15-14.45	The opus magnum: the pedagogy of the oppressed and its main concepts. Radical democracy, liberation and participation; modernization and development. Extension or communication? Education as the practice of freedom.	PROF. LIMA	Z6, 2.014
14.45-15.00	<i>Bus rides to field visits see p.11</i>		
Field visits to providers of adult and continuing education in Würzburg			
15.00-17.00	 Volkshochschule (Adult Education Centre), Würzburg and Surroundings e.V. Meeting point: Z6 2 nd floor in front of the balcony at 14.50	CARACCIOLI	hybrid
	 Chamber of Industry and Commerce (IHK), Würzburg-Schweinfurt Meeting point: Z6 2 nd floor in front of the AEA-Office at 14.50	BOGDANOVIĆ	
	 Robert-Kümmert-Academy, Würzburg Meeting point: Z6 2 nd floor in AEA-Office at 14.50	PROF. EGETENMEYER	
	 Kolping-Academy, Würzburg Meeting point: Z6 1 st floor next to the stairs at 14.50	SAAM	
	 Jugendbildungsstätte Unterfranken, Würzburg Meeting point: Z6 ground floor next to the stairs at 14.50	TROIDL	
Thursday, 5 February 2026			Room
9.00-10.15	Popular adult education and critical literacy: reading the world and reading the words	PROF. LIMA	Z6, 2.014
10.15-10.30	<i>Coffee break</i>		
10.30-11.45	Paulo Freire as public manager of education in the city of São Paulo: "Pedagogy of the city"	PROF. LIMA	Z6, 2.014
12.00-14.00	<i>Lunch break & travel to field visits</i>		
Field visits to adult education providers beyond Würzburg			
14.30-16.00	 Catholic Adult Education (KEB), Frankfurt am Main Meeting point: Z6 2 nd floor in front of the balcony at 12.00	BOGDANOVIĆ	
	 Volkshochschule (Adult Education Centre), Frankfurt am Main Meeting point: Z6 2 nd floor in AEA-Office at 12.00	PROF. EGETENMEYER	hybrid
	 Police Training and Education Centre, Bamberg Meeting point: Z6 1 st floor next to the stairs at 12.00	SAAM	
15.30-17.00	 Deutsche Bahn (German railway), Frankfurt am Main Meeting point: Z6 2 nd floor in front of the AEA-Office at 12.00	CARACCIOLI	
	 Walter-Kolb-Stiftung, Frankfurt am Main Meeting point: Z6 ground floor next to the stairs at 12.00	SCHIFFNER	
16.15 or 17.15	Travel back to Würzburg (Those who wish to remain in the field visit city will return to Würzburg independently)		

Week I: Paulo Freire, adult and permanent education



Friday, 6 February 2026

Room

9.00-10.30	The pedagogy of freedom: teaching and learning	PROF. LIMA	Z6, 2.014
10.30-10.45	<i>Coffee break</i>		
10.45-12.15	The pedagogy of freedom: teaching and learning	PROF. LIMA	Z6, 2.014
12.15-13.45	<i>Lunch break</i>		
Field visits to international adult and continuing education associations			
13.45-15.15	 Esther Hirsch — The role of Adult Education in International Development Cooperation - Position and strategies of DVV International (DVV International)		Z6, 2.011
	 Gina Ebner — Herding cats: European advocacy for adult learning and education (EAEA)		Z6, 1.005 hybrid
	 Katarina Popović — Non-formal civic education: The example of Serbia (ICAE)		Z6, 2.002
	 Angela Owusu-Boampong — Adult Learning and Education monitoring systems (UIL)		Z6, 2.012
15.15-15.30	<i>Coffee break</i>		
15.30-17.00	Reflection of field visits in a Freirean perspective	PROF. LIMA	Z6, 2.014



The moderators and lecturers of week I



Prof. Regina Egetenmeyer, Julius-Maximilians-University Würzburg, Germany

Regina Egetenmeyer works on questions of lifelong learning, informal learning, and professionalisation in adult education and mobility for learning purposes. Since 2013, she holds the Professorship for Adult and Continuing Education at the University of Würzburg. She is a visiting Professor at the International Institute of Adult and Lifelong Education, New Delhi. Her research emphasis is on international comparative research in adult education and lifelong learning.

Prof. Licínio C. Lima, University of Minho, Portugal

Licínio C. Lima is a Professor em. of Sociology, of Education and Educational Administration at the Department of Social Sciences of Education at the University of Minho. He was Head of Department (1998-2004), Head of the Unit for Adult Education (1984-2004), Director of the Research Centre for Education and Psychology (1994-1997) and Director of the PhD in Education. Various European and Brazilian universities hosted him as a guest professor. Further is he an author of many academic works, which are published in nineteen countries, including more than thirty books.



Prof. Nélia Vicente, University of Lisbon, Portugal

Nélia Vicente is a Guest Assistant Professor at Instituto de Educação, Universidade de Lisboa. She holds a Master in Sociology. She does a PhD on adult education.

Prof. Tadej Košmerl, University of Ljubljana, Slovenia

Tadej Košmerl is an Assistant Professor of adult education at the Department of Educational Sciences, Faculty of Arts, University of Ljubljana. His research focuses on adult education policies, adult education for sustainable development, digital transformation in adult education, and transformative learning



Dr. Jörg Schwarz, Julius-Maximilians-Universität of Würzburg, Germany

Dr. Jörg Schwarz' research areas are adult learning and education, organizational research and organizational education; time and temporality in pedagogical fields, adult education professionalism, practice theory and field analysis, research methodologies.

Prof. Paula Guimarães, University of Lisbon, Portugal

Prof. Paula Guimarães, PhD, is an assistant professor at the Instituto de Educação, Universidade de Lisboa (Portugal) since 2012. She holds a PhD in (adult) Education Policies and still researches this topic at a local, national and supra/international levels. Her research interests also include the links between adult education policies and adult educators work and jobs.



Prof. Natália Alves, University of Lisbon, Portugal

Prof. Natália Alves, PhD, is an associate professor at the Institute of Education, University of Lisbon. She holds a PhD on Sociology of Education. Her main fields of research are school to work transitions and IVET and CVET policies, forms of provision, and practices.

Week II: Comparative studies in adult education and lifelong learning



Prior to the Adult Education Academy, all master's and doctoral students prepare a transnational essay that is linked to the topic of the comparative group they choose to work in. The transnational essay will comprise the perspective on adult education in their home countries. The writing process will be guided on WueMahara by the group moderators. Practitioners will hold their good practice presentation, which they have to submit prior to the Academy. The second week focuses on comparing the contexts and countries identified. The comparative group work will result in an open space presentation on Friday showing the results of the comparison.

Room overview for the comparative groups

Comparative Group 1 Room: Z6, 2.007	Comparative Group 2 Room: Z6, 2.005
Comparative Group 3 Room: Z6, 2.004	Comparative Group 4 Room: Z6, 2.003
Comparative Group 5 Room: Z6, 2.002	Comparative Group 6 Room: Z6, 2.012
Comparative Group 7 Room: Z6, 2.011	Comparative Group 8 Room: Z6, 1.007
Comparative Group 9 Room: Z6, 1.006	Comparative Group 10 Room: Z6, 1.005
Comparative Group 11 Room: Z6, 1.004	Comparative Group 12 Room: Z6, 1.003
Comparative Group 13 Room: Z6, 1.002	AEA-Team Office Room: Z6, 2.010

Monday, 9 February 2026

			Room
9.00-10.30	Introduction into comparative adult education	PROF. EGETENMEYER	Z6, 1.012
10.30-10.45	<i>Coffee break</i>		
10.45-12.15	Comparative group work: Introduction	IN GROUPS	CG-Rooms
12.15-13.45	<i>Lunch break</i>		
13.45-15.15	Comparative group work: Participant presentations	IN GROUPS	CG-Rooms
15.15-15.30	<i>Coffee break</i>		
15.30-17.00	Comparative group work: Participant presentations	IN GROUPS	CG-Rooms
18.00	Cultural Evening in Comparative groups	IN GROUPS	

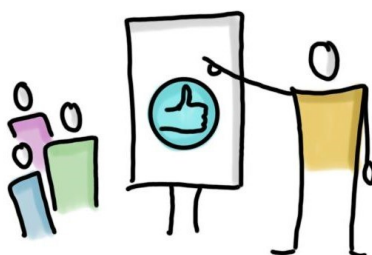
Week II: Comparative studies in adult education and lifelong learning



Tuesday, 10 February 2026

Room

9.00-10.30	Comparative group work: Participant presentations	IN GROUPS	CG-Rooms
10.30-10.45	<i>Coffee break</i>		
10.45-12.15	Comparative group work	IN GROUPS	CG-Rooms
12.15-13.45	<i>Lunch break</i>		
13.45-14.30	Good practice presentations I		
	<ul style="list-style-type: none"> Issam Awwad & Khalil Ad Shawaheen — Partnership as a Fundamental Pillar in the Adult Learning and Education System (CG 6) 	PROF. GUIMARÃES	Z6, 2.012
	<ul style="list-style-type: none"> Anastasia Nicolaescu — Gender-Sensitive Adult Learning and Education Activities in Moldova: Civil Society and Municipality Efforts (CG 9) 	PROF. ALVES	Z6, 1.006
14.30-15.15	<ul style="list-style-type: none"> Merita Shala & Mevlude Pacolli — The Journey of Curriculum glob-ALE: Experiences from Kosovo (CG 10) 	DR. CORYELL	Z6, 1.005
	Good practice presentations II		
	<ul style="list-style-type: none"> Arpine Mazhinyan — Armenia's Member Cities in the UNESCO Global Network of Learning Cities: Challenges and Prospects for Growth (CG 2) 	PROF. HINZEN	Z6, 2.005
15.15-15.30	<ul style="list-style-type: none"> Baraah Jawdat — Programme Planning in Community-Based Adult Education: A Good Practice Example from Creativity Club – Karak (CG 4) 	PROF. MIKULEC	Z6, 2.003
	<ul style="list-style-type: none"> Ajla Sijerčić & Adnan Mevic — The Strategic Platform for Adult Education as a Policy Instrument in Bosnia and Herzegovina (CG 6) 	PROF. GUIMARÃES	Z6, 2.012
15.15-15.30	<i>Coffee break</i>		
15.30-17.00	Comparative group work	IN GROUPS	CG-Rooms



Week II: Comparative studies in adult education and lifelong learning



Wednesday, 11 February 2026			Room
9.00-10.30	Comparative group work	IN GROUPS	CG-Rooms
10.30-10.45	<i>Coffee break</i>		
10.45-12.15	Comparative group work	IN GROUPS	CG-Rooms
12.15-13.45	<i>Lunch break</i>		
Good practice presentations III			
13.45-14.30	<ul style="list-style-type: none"> Tatiana Turchina — Bridging Generations Through Lifelong Learning: the experience of University for the Third Age (U3A) as a catalyst for Community Engagement (CG 3) 	PROF. BOFFO	Z6, 2.004
	<ul style="list-style-type: none"> Alayet Safouen — Exploring program planning in adult education in the Tunisian context: good practices and key challenges (CG 4) 	PROF. MIKULEC	Z6, 2.003
Good practice presentations IV			
14.30-15.15	<ul style="list-style-type: none"> Nini Mania & Ana Ugrehelidze — Adult and Community Education Centers in Georgia: Structures, Functions, and Socio-Economic Impact on society (CG 8) 	PROF. JOANPERE-FORASTER	Z6, 1.007
	<ul style="list-style-type: none"> Victoriia Furhalo — Fostering Adult Education in wartime Ukraine: Challenges and Responses (CG 13) 	PROF. SCHMIDT-LAUFF	Z6, 1.002
15.15-15.30	<i>Coffee break</i>		
15.30-17.00	Comparative group work	IN GROUPS	CG-Rooms
17.00-17.30	Information on examination and grading possibilities	PROF. EGETENMEYER	Z6, 1.012

Thursday, 12 February 2026			Room
9.00-10.30	Comparative group work	IN GROUPS	CG-Rooms
10.30-10.45	<i>Coffee break</i>		
10.45-12.15	Comparative group work	IN GROUPS	CG-Rooms
12.15-13.45	<i>Lunch break</i>		
13.45-15.15	Comparative group work	IN GROUPS	CG-Rooms
15.15-15.45	<i>Coffee break</i>		
15.45-17.00	Comparative group work	IN GROUPS	CG-Rooms
17.00-17.30	Information about the possibility of publication (doctoral students, practitioners and master students)	PROF. JEAN-FRANCOIS	Z6, 1.012

Week II: Comparative group presentations



Friday, 13. February 2026			ROOM
9.00-9.15	Welcoming to the group presentations	PROF. EGETENMEYER	Z6 2 nd floor in front of the balcony
9.15-9.40	Comparative group 1—audience group 5 & 9		Z6, 2.007
	Comparative group 2—audience group 6 & 10		Z6, 2.005
	Comparative group 3—audience group 7 & 11		Z6, 2.004
	Comparative group 4—audience group 8, 12 & 13		Z6, 2.003
9.45-10.10	Comparative group 1—audience group 8, 12 & 13		Z6, 2.007
	Comparative group 2—audience group 5 & 9		Z6, 2.005
	Comparative group 3—audience group 6 & 10		Z6, 2.004
	Comparative group 4—audience group 7 & 11		Z6, 2.003
10.10-10.25	<i>Coffee break</i>		
10.25-10.50	Comparative group 5—audience group 1 & 9		Z6, 2.002
	Comparative group 6—audience group 2 & 10		Z6, 2.012
	Comparative group 7—audience group 3 & 11		Z6, 2.011
	Comparative group 8—audience group 4, 12 & 13		Z6, 1.007
10.55-11.20	Comparative group 5—audience group 4, 12 & 13		Z6, 2.002
	Comparative group 6—audience group 1 & 9		Z6, 2.012
	Comparative group 7—audience group 2 & 10		Z6, 2.011
	Comparative group 8—audience group 3 & 11		Z6, 1.007
11.20-11.30	<i>Coffee break</i>		
11.30-11.55	Comparative group 9—audience group 1 & 6		Z6, 1.006
	Comparative group 10—audience group 2 & 7		Z6, 1.005
	Comparative group 11—audience group 3 & 8		Z6, 1.004
	Comparative group 12—audience group 4		Z6, 1.003
	Comparative group 13—audience group 5		Z6, 1.002
12.00-12.25	Comparative group 9—audience group 4		Z6, 1.006
	Comparative group 10—audience group 5		Z6, 1.005
	Comparative group 11—audience group 1 & 6		Z6, 1.004
	Comparative group 12—audience group 2 & 7		Z6, 1.003
	Comparative group 13—audience group 3 & 8		Z6, 1.002
12.30-12.50	Cleaning up		CG-ROOMS
12.50-13.25	Evaluation		CG-ROOMS
13.25-13.40	Closing session	PROF. EGETENMEYER	Z6 2 nd floor in front of the balcony
15.00-17.00	Celebratory afternoon at the Neubaukirche		
17.00-19.00	Evening get together at the Max-Stern-Keller		

Week II: Comparative group overview



Topic		Moderators
Group 1:	Peacebuilding and Intercultural Dialogue in Adult Learning and Education	<i>Amina Isanović Hadžiomerović, University of Sarajevo, Bosnia and Herzegovina</i> <i>Larisa Kasumagić-Kafedžić, University of Sarajevo, Bosnia and Herzegovina</i>
Group 2:	Developing Learning Ecosystems through ALE - The Roles of Learning Cities and Communities	<i>Balázs Németh, University of Pécs, Hungary</i> <i>Heribert Hinzen, University of Pécs, Hungary</i> <i>Koltai Zsuzsa, University of Pécs, Hungary</i>
Group 3:	Active Ageing in the Longevity World: Adult Education, Lifelong Learning and Competences	<i>Vanna Boffo, University of Florence, Italy</i> <i>Fabio Togni, University of Florence, Italy</i> <i>Debora Daddi, University of Florence, Italy</i>
Group 4:	Programme planning and analysis in Adult Education: Dealing with power and going beyond power	<i>Borut Mikulec, University of Ljubljana, Slovenia</i> <i>Bernd Käßpflinger, University of Gießen, Germany</i>
Group 5:	Artificial Intelligence and Adult Education: Policies, Practices and Challenges	<i>Emmanuel Jean-Francois, Xavier University of Louisiana, United States of America</i>
Group 6:	National/regional Adult Education and Lifelong Learning policies	<i>Paula Guimarães, University of Lisbon, Portugal</i> <i>Lucas Pacheco Campos, University of Juiz de Fora, Brazil</i>
Group 7:	(Generative) Artificial Intelligence in Adult Education and Lifelong Learning	<i>Lisa Breitschwerdt, Julius-Maximilians-Universität Würzburg, Germany</i> <i>Jan Schiller, Helmut-Schmidt-Universität Hamburg, Germany</i>
Group 8:	The Social Impact of Adult Education on Learners' Lives	<i>Mar Joanpere Foraster, University of Rovira i Virgili, Spain</i> <i>Elisabetta Ghedin, University of Padova, Italy</i>
Group 9:	Adult Education and gender: mature women in Higher Education	<i>Natália Alves, University of Lisbon, Portugal</i> <i>Burcu Şimşek, Hacettepe University Ankara, Turkey</i>
Group 10:	Curriculum Internationalisation in Higher Education: Policies and strategies	<i>Joellen Coryell, Texas State University, United States of America</i> <i>Marica Liotino, University of Padova, Italy</i>
Group 11:	Faculty development: Policies, Organisational challenges and professional development	<i>Monica Fedeli, University of Padova, Italy</i> <i>Laura Bierema, University of Georgia, United States of America</i>
Group 12:	Adult learning and education for all?! Issues of inclusion with regard to disability in the limelight	<i>Silke Schreiber-Barsch, University of Duisburg-Essen, Germany</i> <i>Marina Rößner, University of Duisburg-Essen, Germany</i>
Group 13:	Time Matters: Exploring Temporal Challenges and Opportunities in Adult Education and Learning	<i>Sabine Schmidt-Lauff, Helmut-Schmidt-Universität Hamburg, Germany</i> <i>Miriam Douglas, West Liberty University (WLU), West Virginia, United States of America</i> <i>Jörg Schwarz, Julius-Maximilians-Universität Würzburg, Germany</i>

Week II: Comparative group moderators



Comparative Group 1: Peacebuilding and Intercultural Dialogue in Adult Learning and Education

Prof. Amina Isanović Hadžiomerović , University of Sarajevo, Bosnia and Herzegovina

Assist. Prof. Amina Isanović Hadžiomerović teaches Adult Education, Career Guidance, Evaluation in Education and Research Methods at the Faculty of Philosophy, University of Sarajevo (Bosnia and Herzegovina). She is also head of the Lifelong Learning and Continuing Education Center at the same Faculty.



Prof. Larisa Kasumagić-Kafedžić , University of Sarajevo, Bosnia and Herzegovina

Larisa Kasumagić-Kafedžić is an Associate Professor at the University of Sarajevo- Faculty of Philosophy (English Language Teacher Education) with extensive international experience in various projects and education initiatives. Her teaching expertise and research interests are in the fields of intercultural education, peace pedagogy, language teaching, and teacher development. She is the founder and the president of the Peace Education Hub (<https://peacehub.ba>), which was established at the University of Sarajevo in early 2020.



Comparative Group 2: Developing Learning Ecosystems through ALE — The Roles of Learning Cities and Communities

Prof. Heribert Hinzen, University of Pécs, Hungary

Heribert Hinzen is a senior consultant on adult education and lifelong learning for sustainable development. He worked for DVV International for almost four decades, both in headquarters and in offices in Sierra Leone, Hungary and Lao PDR. He is an Honorary Professor at the University of Pécs, and teaches comparative adult education in Würzburg. His research interests include the institutionalization and professionalization of ALE, global citizenship education as well as education for sustainable development.



Prof. Balázs Németh, University of Pécs, Hungary

Balázs Németh is an associate professor and reader in Adult Learning and Education at the University of Pécs. He is also a founding member of the Hungarian University Lifelong Learning Network (MELLearn) and represents the University of Pécs in the European Universities Continuing Education Network (EUCEN) and in the European Association for the Education of Adults (EAEA). His research focus is on comparative analysis of policies of the member states of the EU on adult and lifelong learning.



Week II: Comparative group moderators



Dr. Zsuzsa Koltai, University of Pécs, Hungary

Dr. Zsuzsa Koltai is an Assistant Professor and Deputy Head of Department at the University of Pécs, Faculty of Humanities and Social Sciences, Institute for Human Development and Cultural Studies, Department of Cultural Studies, Hungary. She has been teaching courses related to museum education, cultural heritage and cultural history at the University of Pécs since 2004. Zsuzsa Koltai has been a lecturer at the University of Klagenfurt, Austria, since 2016, teaching the course Lifelong Learning in Museums: The Theory and Practice of Museum Learning.



Comparative Group 3: Active Ageing in the Longevity World: Adult Education, Lifelong Learning and Competences

Prof. Vanna Boffo, University of Florence, Italy

Prof. Dr. Vanna Boffo, Ph.D, is Full Professor in Adult and Continuing Education and Head of the Department of Education, Languages, Interculture, Literatures and Psychology at the University of Florence, Italy (2021-2025). She is Coordinator of Education and Psychology Doctoral Course (2019-2025). Her research focuses on the transition to work at the Higher Education level. She is Coordinator of the Transversal Board Learning, Education and Active Ageing in the Resilience and Recovery Plan Programme “Age-it. Consequences and challenges of ageing” (2023-2026).



Prof. Fabio Togni, University of Florence, Italy

Prof. Fabio Togni, PhD, is Associate Professor in General and Social Pedagogy at the Department of Education, Languages, Interculture, Literatures and Psychology, University of Florence, Italy. His research focuses on Philosophy of Education, Longevity and Quality Education at the Higher Education level.



Dr. Debora Daddi, University of Florence, Italy

Debora Daddi, PhD, is junior researcher in General and Social Pedagogy at the Department of Education, Languages, Interculture, Literatures and Psychology, University of Florence, Italy. Her research focuses on Active Ageing and Longevity, Professionalization and Adult Education.



Week II: Comparative group moderators



Comparative Group 4: Programme planning and analysis in Adult Education: Dealing with power and going beyond power

Prof. Borut Mikulec, University of Ljubljana, Slovenia

Prof. Borut Mikulec is associate professor of adult and continuing education at the Department of Educational Sciences at the University of Ljubljana. His research areas include the role of international organisations in education policy, international and comparative adult education, the policy in adult education, professionalisation of adult educators, continuing vocational education and training, and citizenship education.



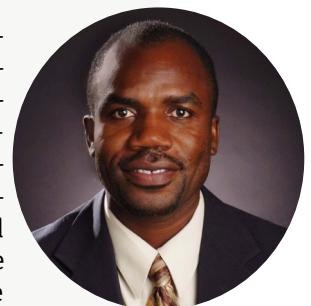
Prof. Bernd K  pplinger, Justus-Liebig-University Gießen, Germany

Prof. Bernd K  pplinger, Full Professor for Continuing Education at Justus-Liebig-University Gießen. Member of ESREA and RWL. His research areas include program planning, professionalization of adult educators, history of adult education.

Comparative Group 5: Artificial Intelligence and Adult Education: Policies, Practices and Challenges

Prof. Emmanuel Jean-Francois, Xavier University of Louisiana, United States of America

Prof. Emmanuel Jean-Francois is Associate Professor of Educational Leadership at Xavier University of Louisiana (New Orleans). His most recent books include: "Transnational perspectives on innovation in teaching and learning technologies" (2018), Perspectives in Transnational Higher Education (2016), "Building global education with a local perspective: An introduction to global higher education (2015)", "Financial sustainability for non-profit organizations (2014)", "Trans-cultural blended learning and teaching in post-secondary education (2012)", "DREAM model to start a small business (2011)", and "Global education on trial by U.S. college professors (2010)". He is the Editor-in-Chief of the peer-reviewed journal The African Symposium, the Chair of the African Educational Research Network (AERN), and is the Past-President of the Transnational Education and Learning Society (TELS).



Week II: Comparative group moderators



Comparative Group 6: National/regional Adult Education and Lifelong Learning policies

Prof. Paula Guimarães, University of Lisbon, Portugal

Prof. Paula Guimarães, PhD, is an assistant professor at the Instituto de Educação, Universidade de Lisboa (Portugal) since 2012. She holds a PhD in (adult) Education Policies and still researches this topic at a local, national and supra/international level. Her research interests also include the links between adult education policies and adult educators work and jobs.



Lucas Pacheco Campos, University of Juiz de Fora, Brazil

Lucas Campos has been a Public Administrator Specializing in Education at Fluminense Federal University (Brazil) since 2023 and served as an Assistant Professor at the Federal University of Juiz de Fora (Brazil) from 2018 to 2023. He holds a PhD in Public Policies and Human Development from Rio de Janeiro State University (Brazil), completed in partnership with the Institute of Education at the University of Lisbon (Portugal).

Comparative Group 7: (Generative) Artificial Intelligence in Adult Education and Lifelong Learning

Dr. Lisa Breitschwerdt, Julius-Maximilians-Universität of Würzburg, Germany

Dr. Lisa Breitschwerdt (JMU Würzburg, Germany) is a research associate at the Professorship for Adult and Continuing Education at the University of Würzburg. She works on digitalisation in adult and higher education, among other things on the didactic-technical conception and design of synchronous hybrid settings, questions of the impact of digital transformation on adult education organisations and the beliefs of adult educators towards digitalisation and the use of digital media. Other areas of her interests lie in professionalisation in adult education, didactics and methods of teaching and learning and dialogical perspectives in adult education research.



Dr. Jan Schiller, Helmut Schmidt University Hamburg, Germany

Dr. Jan Schiller has been a research assistant at the Professorship for Continuing Education and Lifelong Learning since November 2016 at Helmut Schmidt University/University of the Federal Armed Forces Hamburg. He currently researches and teaches primarily on questions of digitalization in adult education/further education, time-related issues in the context of education in connection with educational sociological and contemporary philosophical approaches, European and national educational policy as well as formats, didactics and target groups of academic continuing education. Jan Schiller did his doctorate on the subject of Education for an Uncertain Future. Temporal Agendas in the Context of Continuing University Education, and was awarded the 2022 Dissertation Prize of the German Association for Continuing Education and Distance Learning (DGWF). He worked on international comparative issues and those of open education in the completed ERASMUS+ joint project INTALL, previously COMPALL. He is currently working with the dtcc-bw project DigiTaKS*

Week II: Comparative group moderators



Comparative Group 8: The Social Impact of Adult Education on Learners' Lives

Prof. Dr. Mar Joanpere Foraster, University of Rovira i Virgili, Spain

Prof. Mar Joanpere Foraster PhD in Sociology from the University of Barcelona is a member of the Organizational and Social Analysis Research Centre. In 2016, she was selected as a pre-doctoral visiting researcher at Stanford University's Graduate School of Education, where she joined the Race, Inequality, and Language in Education (RILE) group as part of the EU Horizon 2020 Marie Skłodowska-Curie RISE program. In the 2024–2025 winter term, she served as an Assistant Professor at Julius-Maximilians-Universität Würzburg (JMU) through a contract with the German Academic Exchange Service (DAAD). Throughout her academic career, Dr. Joanpere Foraster has participated in seven major research projects, including three funded under European frameworks and three under the Spanish National R&D&I Plan. She also plays an active role in scientific publishing and academic networks. Additionally, she has served as Vice President and member of the Executive Committee of the Catalan Sociological Association, representing it in the Spanish Federation of Sociology and the European Sociological Association.



Prof. Elisabetta Ghedin, University of Padova, Italy

Prof. Elisabetta Ghedin PhD. is Associate Professor in Inclusive education at the dept. FISPPA (Philosophy, Sociology, Pedagogy and Applied Psychology), University of Padova. Since 2022 she is Master's Degree Coordinator of Management of Educational Services, Adult and Continuing Education and since 2025, Director of the Postgraduate Specialisation Programme in Educational Support for Students with Disabilities". She is also the Coordinator of the curriculum RIWSE "Research on Inclusion, Well-being, and Sustainability in Education", PhD. Course on Pedagogical, Educational and Training Sciences – SPEF, University of Padova.

Comparative Group 9: Adult Education and Gender: Mature women in Higher Education

Prof. Natália Alves, University of Lisbon, Portugal

Prof. Natália Alves, PhD, is an associate professor at the Institute of Education, University of Lisbon. She holds a PhD on Sociology of Education. Her main fields of research are school to work transitions and IVET and CVET policies, forms of provision, and practices.



Week II: Comparative group moderators



Prof. Burcu Şimşek, Hacettepe University Ankara, Turkey

Burcu Şimşek is an associate professor at Hacettepe University, Faculty of Communication, Department of Communication Sciences, Ankara, Turkey. She is the founder and the coordinator of the Digital Storytelling Workshop Unit in the Department of Communication Sciences. She completed her PhD with a thesis on digital storytelling and feminist activism at the Creative Industries Faculty, Queensland University of Technology, in Australia, in 2012 and has a MSc degree in Women's Studies, Ankara University. She started her career as a journalist in 1998. Since then, she has been involved with storytelling and related practices for learning. She has facilitated over a hundred digital storytelling workshops in Turkey and abroad with various groups on diverse themes, from gender equality to migration and higher education, since 2009. She created and facilitated training on inclusion in diverse projects and programs of international organisations with storytelling pedagogies.

Comparative Group 10: Curriculum Internationalisation in Higher Education: Policies and strategies

Dr. Joellen Coryell PHD, Texas State University, United States of America

Joellen E. Coryell, PhD, is Associate Dean for Educational Partnerships and Enrollment for the College of Education and Professor of Adult, Professional, and Community Education in the Department of Counseling, Leadership, Adult Education, and School Psychology at Texas State University. She holds a PhD in educational human resource development and adult education from Texas A&M University. Across her career, she worked in executive business management and corporate training, in faculty development for learning and teaching, and as program director for master's and doctoral programs in two universities. In her current role as Associate Dean, she provides direction for creating and sustaining educational partnerships in the public and private sectors.



Marica Liotino, PHD, University of Padova, Italy

Marica Liotino, PhD., is a postdoctoral research fellow and lecturer of teaching and learning methods and organizational development in the Department of Philosophy, Sociology, Pedagogy, and Applied Psychology at the University of Padova. Dr. Liotino is an e-tutor in the Management of Educational Services and Lifelong Learning master's program and a member of the organizing committee for the professional master's program in Organizational Coaching: Leadership and Lifelong Learning. Her research interests include adult education, organizational and faculty development, diversity management, gender equity, technology-enhanced learning, online learning, and digital competencies. She has published over ten contributions in books, national, and international journals, and she is a member of the editorial board of the Excellence and Innovation in Learning and Teaching journal.



Week II: Comparative group moderators



Comparative Group 11: Faculty development: Policies, Organisational challenges and professional development

Prof. Monica Fedeli, University of Padova, Italy

Prof. Monica Fedeli PhD, currently Vice-Rector at Third Mission and full professor at University of Padova. She has been Adjunct Professor at Boston University, at Michigan State University, at Julius-Maximilian University of Würzburg, Germany, and Visiting Professor at California University Berkeley, School of Education. Her research interests include: active teaching, participatory teaching and learning, faculty development, university business dialogue, women leadership, and professional development. She published more than 70 articles, books, and book chapters in variety of national and international journals, and book series.



Prof. Laura Bierema, University of Georgia, United States of America

Laura L. Bierema is a Professor of Adult Learning, Leadership, and Organization Development in the Department of Lifelong Education, Administration, and Policy, in the University of Georgia's Mary Frances Early College of Education. She is the past president of the Academy of Human Resource Development (AHRD), and current Vice-President of the Graduate School Alliance for Education in Coaching (GSSAEC). She has been a Fulbright Scholar and Specialist and inducted in the Human Resource Development Scholar Hall of Fame and the International Adult and Continuing Education Hall of Fame.

Comparative Group 12: Adult learning and education for all?! Issues of inclusion with regard to disability in the limelight

Prof. Silke Schreiber-Barsch, University of Duisburg-Essen, Germany

Prof. Silke Schreiber-Barsch, PhD, is Professor in adult and further education at University of Duisburg-Essen, Germany. Moreover, she has been appointed as Research Associate at the Centre for Higher and Adult Education, Stellenbosch University, South Africa. Her research interests include international and comparative adult education, lifelong learning, issues of participation and social inclusion/exclusion, global citizenship education, and adult education and disability.



Marina Rößner, University of Duisburg-Essen, Germany

Marina Rößner is a researcher at the Professorship for Adult Education at the University of Duisburg-Essen. Prior to this, she studied education and special education at the Julius-Maximilians-University Würzburg (bachelor's degree) and educational science with a focus on 'Participation and Lifelong Learning' at the University of Hamburg (master's degree). During her studies, she was a student assistant at the Professorship of Adult and Continuing Education at Julius-Maximilians-University Würzburg and a research assistant at the Department of Special Needs Education at the University of Hamburg.

Week II: Comparative group moderators



Comparative Group 13: Time Matters: Exploring Temporal Challenges and Opportunities in Adult Education and Learning

Prof. Sabine Schmidt-Lauff, Helmut Schmidt University/University of the Federal Armed Forces Hamburg, Germany

Prof. Sabine Schmidt-Lauff holds the Professorship for Continuing Education and Lifelong Learning. A special focus of her research and numerous national as well as international publications is on temporal and time-related challenges for learning throughout the whole lifespan in a globalised and virtualized world. Other research interests are on professionalisation and professional identity, and, on international-comparative research on lifelong learning.



Prof. Miriam Douglas, West Liberty University, West Virginia

Dr. Miriam Roth Douglas is a full Professor of Education and the Coordinating Director of the Community Education Program in the College of Education and Human Performance at West Liberty University. She is also an Advisor in MAED/Community and Organizational Leadership.

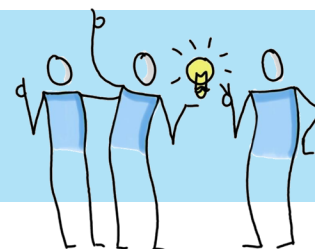
Dr. Jörg Schwarz, Julius-Maximilians-Universität of Würzburg, Germany

Dr. Jörg Schwarz' research areas are adult learning and education, organizational research and organizational education; time and temporality in pedagogical fields, adult education professionalism, practice theory and field analysis, research methodologies.



How to get to the Neubaukirche

Neubaukirche · Neubaustraße 38 · 97070 Würzburg



Our celebratory afternoon on the last day of the Adult Education Academy will take place in the Neubaukirche. Below you can find some practical information on how to get there.

Option 1:

Bus 10 from **"Universitätsbibliothek"** to **"Sanderring"** followed by an about 5 minute walk to the Neubaukirche

Option 2:

Bus 114/214 from either **"Philosophische Fakultät"** or **"Universitätsbibliothek"** or bus 14 from **"Campusbrücke"** to **"Mainfrankentheater"** followed by either a short walking distance to the tramstop **"Dom"** until **"Neubaustraße"** and a round about 5 minute walk to the Neubaukirche

Option 3:

Bus 114/214 from either **"Philosophische Fakultät"** or **"Universitätsbibliothek"** or bus 14 from **"Campusbrücke"** to **"Mainfrankentheater"** followed by a walk to the Neubaukirche from the theater directly (approximately 15 minutes starting at the Mainfrankentheater)

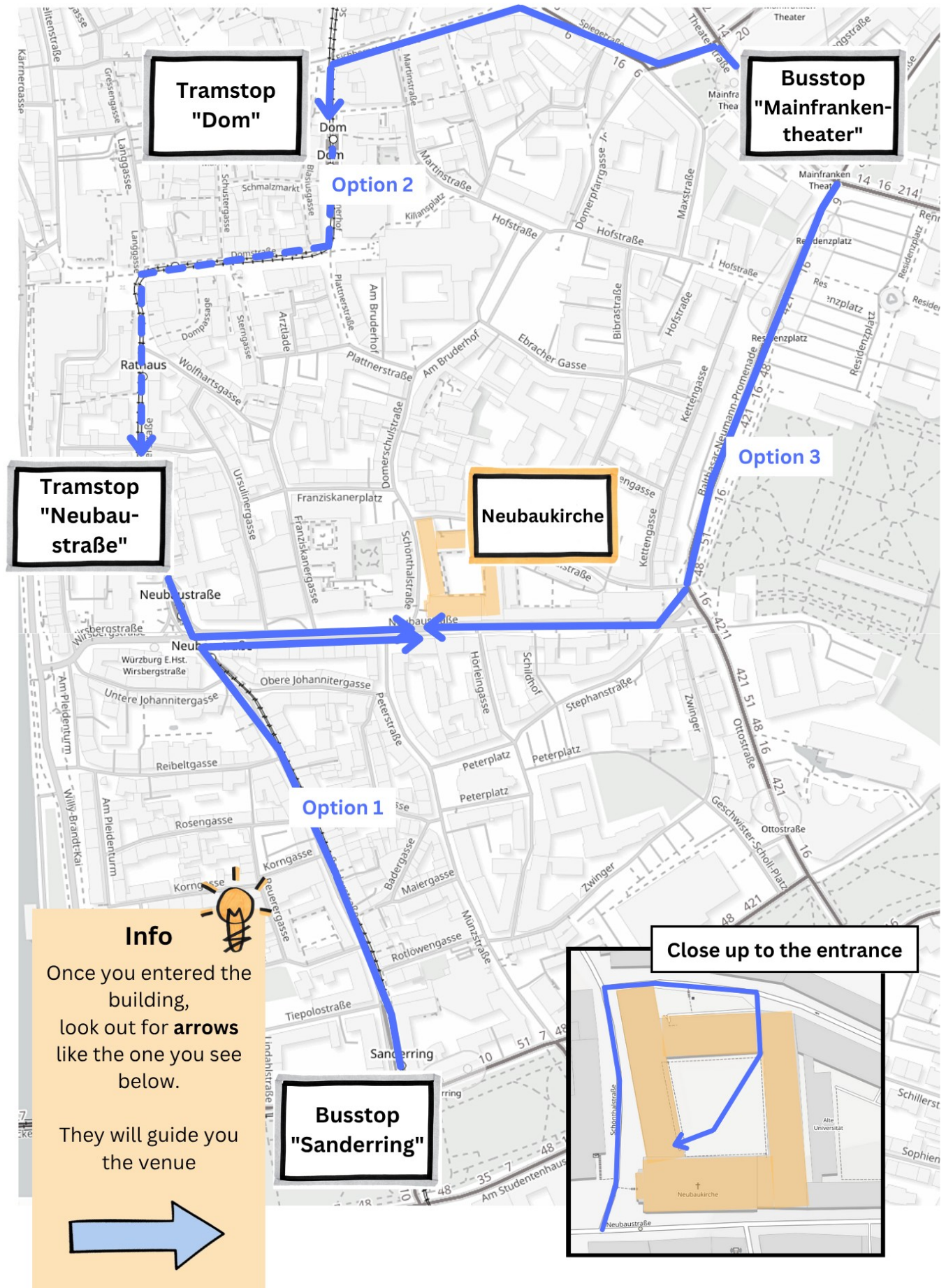
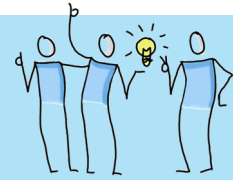
You want to travel to the Neubaukirche together?

After you have decided on one of the 3 options, please get together in the respective group. Each group has a group leader who will accompany you to the Neubaukirche. You will meet them in front of the AEA-Office **at 14.00 CET** (Be aware that we **cannot wait for people running late**, so make sure to be punctual)



How to get to the Neubaukirche

Neubaukirche · Neubaustraße 38 · 97070 Würzburg



Certification and follow-up

Participation certificate and grading possibilities

After successfully participating in the Adult Education Academy and completing a transnational essay, students receive a certificate of attendance (10 ECTS). All formally registered students can opt to participate in an examination for receiving a formal transcript including a grade (15 ECTS).

Participation is considered successful after **attending the complete programme** and either **submitted a transnational essay and passed the plagiarism check (master's and doctoral students)** or if you **gave a good practice presentation during the Academy (practitioners)**.

Please be aware that **participation is only possible if you complete the preparations during the preparation phase and attend the full programme**, which starts on 02 February 2026, 8.00 CET and ends on 13 February 2026 at 17.00 CET. In exceptional cases, which will be considered individually, it is possible to receive individual certificates for one of the two weeks or a good practice presentation.

Option 1 (10 ECTS)

Participation in the online preparatory phase + full attendance at the Academy in february

Submission of a transnational essay/ good practice presentation

Option 2 (15 ECTS + grade)

Participation in the online preparatory phase + full attendance at the Academy in february

Submission of a transnational essay/ good practice presentation

Submission of the transnational essay/ good practice essay for grading and a plagiarism check

Publication option

Doctoral students, practitioners and Master students have the option to get guidance for publishing a joint comparative paper together with their comparative group moderators after the Adult Education Academy. Further information for those interested in this option will be provided during the Adult Education Academy.



Join us on social media

#AEAcademyWue

LinkedIn Network

The LinkedIn Network for adult education and lifelong learning is one of several features of the annual Adult Education Academy. Our aim is to connect students, researchers, experts and professors interested in adult education and lifelong learning. We offer the “professional network” LinkedIn group. As a (future) participant with a LinkedIn account, we invite you to join the professional network.



The “Professional network for adult education and lifelong learning”

The professional network is a group for professionals, whose jobs, studies or interests link them to adult education and lifelong learning. For this reason, we have set up our public LinkedIn group for participants from all former Adult Education Academies and also for professionals working in the field. Not only will you be able to connect with fellow students and professionals, you will also get information about international conferences, fellowships/scholarships, research projects, recently published papers, calls for papers, professional newsletters, online presentations and, of course, member’s thoughts about various topics in adult education and lifelong learning. This group already has over 2400 members from all over the world.

Join our professional LinkedIn network

go.uniwue.de/linkedin-network

The Professorship for Adult and Continuing Education on Social Media

Follow us on Instagram (@ebwuerzburg)! We post information about the Chair of Adult/Continuing Education on our Instagram account. You can also reach us here for general questions via direct message.



< ebwuerzburg

...



Professur für Erwachsenenbildung/
Weiterbildung

48 Beiträge 348 Follower 46 Gefolgt

Professorship for Adult and Continuing Education
Julius-Maximilians-Universität Würzburg

Twitter: @EBWuerzburg

Join our LinkedIn Network! (URL below)

Übersetzung anzeigen

www.paedagogik.uni-wuerzb... und 2 weitere

Folgen

Nachricht



Welcome W...



AEA



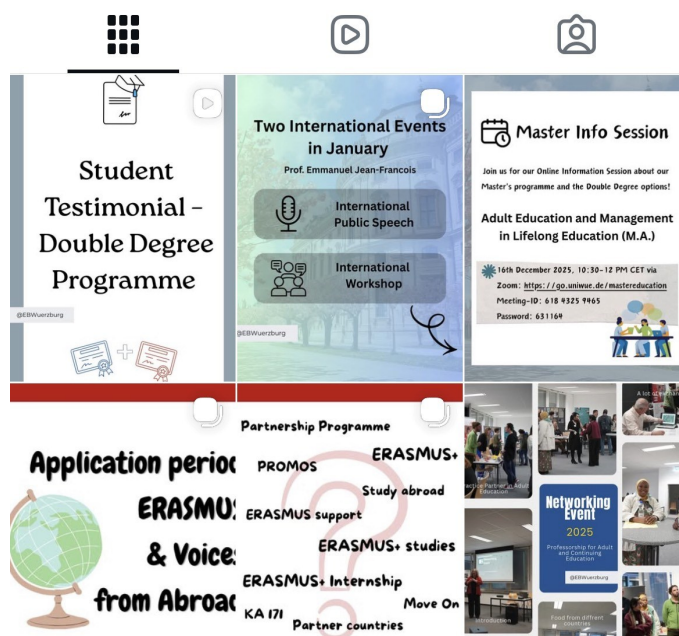
Events



Erasmus



FAQ - D



JMU platforms

Catalogue University Library Würzburg

In the catalogue you will find books and other media that are printed or available electronically from us. At the same time, you can also search many databases and other sources for independent literature, such as articles from magazines. This literature is not always available with us.



[Searching the catalogue - University Library \(uni-wuerzburg.de\)](https://uni-wuerzburg.de)

Outlook / Microsoft Exchange

You can retrieve the e-mail address that you receive from the university at any time without a special mail client from the browser (<name.surname>@stud-mail.uni-wuerzburg.de).



[JMU Mail \(uni-wuerzburg.de\)](https://uni-wuerzburg.de)

WueCampus

WueCampus is the university-wide online learning platform that provides the learning content, the organisation of learning units and learning processes, and serves as a communication platform.



[WueCampus \(uni-wuerzburg.de\)](https://uni-wuerzburg.de)

WueMahara

Mahara is an e-portfolio software with community functions. The system supports the documentation and reflection of the learning process and the learning outcomes.



[Home page - Mahara \(uni-wuerzburg.de\)](https://uni-wuerzburg.de)

WueStudy

WueStudy is the campus management system of the JMU and supports the entire student life cycle for all participants. On the platform you can find application management, student management, course management, event and room management and audit management.



[Home page - WueStudy \(uni-wuerzburg.de\)](https://uni-wuerzburg.de)

Zoom

Zoom Meetings is a video conferencing tool with recording and screen sharing features.

[Video conferences, web conferences, Webinars, Screensharing - Zoom](https://uni-wuerzburg.de)



Team of the Adult Education Academy



Prof. 'in Dr. Regina Egetenmeyer

Head of the Professorship for Adult and Continuing Education



Julia Saam, M.A.

Contact for the Adult Education Academy programme



Eva Schiffner, M.A.

Contact for the Adult Education Academy programme and the Master programme in Adult Education and Management in Lifelong Education



Dr. Jörg Schwarz

Contact for the Master programme in Adult Education and Management in Lifelong Education



Kilian Troidl, M.A.

Contact for the Master programme in Adult Education and Management in Lifelong Education



Tommaso Caraccioli, M.A.

Contact for the Double Degree Options in the Master programme in Adult Education and Management in Lifelong Education



Vanja Bogdanović, M.A.

Contact for ERASMUS+



Fritzi Rodde, M.A.

Contact for ERASMUS+ and the Guest lectureship



Dr. Lisa Breitschwerdt

Contact for hybrid teaching



Christina Hümmer, M.A.

Contact for hybrid teaching

Contact information

Julius-Maximilians-University Würzburg
Institute for Education
Professorship for Adult and Continuing Education
Oswald-Külpe-Weg 82
97074 Würzburg, GERMANY

Phone.: +49 931-31 85226
lifelonglearning@uni-wuerzburg.de
www.lifelonglearning.uni-wuerzburg.de

Venue

University of Würzburg
Z6 building "Zentrales Hörsaal- und
Seminargebäude"
Winter School Office: Room 2.010 (2nd floor)
Campus Hubland Nord
97074 Würzburg

We wish you all the best and stay healthy!

Adult Education Academy 2026

International and comparative studies
in adult education and lifelong learning

All rights reserved.

Julius-Maximilians-University Würzburg
Institute for Education
Professorship for Adult and Continuing Education
Oswald-Külpe-Weg 82
97074 Würzburg, GERMANY
Tel.: +49 931-31 85226
lifelonglearning@uni-wuerzburg.de
www.lifelonglearning.uni-wuerzburg.de

AEACADEMY-GUIDE