

# Adult Education Academy

for master's students, doctoral students and practitioners

International and comparative studies  
in adult education and lifelong learning



**6 - 17 February 2023**

in Würzburg/Bavaria, Germany

**#AEAcademyWue**

In cooperation with



PÉCSI TUDOMÁNYEGYETEM  
UNIVERSITY OF PÉCS



OBAFEMI AWOLowo  
UNIVERSITY



Faculty of Education  
Bayero University Kano



Univerza v Ljubljani  
FILOZOFSKA  
FAKULTETA



UNIVERSITÀ  
DEGLI STUDI  
FIRENZE



UNIVERSITÀ  
DEGLI STUDI  
DI PADOVA



HELMUT SCHMIDT  
UNIVERSITÄT  
Universität der Bundeswehr Hamburg



Forum  
Afrikazentrum  
Universität Würzburg



University of Delhi



Universidade do Minho



INSTITUTO DE  
EDUCAÇÃO  
ULISBOA



EUROPEAN ASSOCIATION FOR  
THE EDUCATION OF ADULTS



DVV International

With financial support from



Erasmus+



Human Dynamics Centre

# Index

<b>Structure of the Adult Education Academy .....</b>	<b>04</b>
<b>Week one, 6 - 10 February 2023 .....</b>	<b>06</b>
Intensive online week, 6 - 10 February 2023	
Option 1: International strategies in adult education.....	06
Option 2: Paulo Freire, adult and permanent education .....	09
<b>Week two, 13 - 17 February 2023 .....</b>	<b>12</b>
On campus week, 13 - 17 February 2023	
Comparative studies in adult education and lifelong learning .....	12
Comparative groups overview .....	17
Comparative groups moderators .....	18
<b>Certification and follow-up .....</b>	<b>24</b>
<b>Join us on social media .....</b>	<b>25</b>
<b>Travel &amp; Venue .....</b>	<b>26</b>
<b>Accommodation .....</b>	<b>28</b>
<b>Which platforms are used?.....</b>	<b>29</b>
<b>Key .....</b>	<b>30</b>
<b>Contact information .....</b>	<b>31</b>

# Structure of the Adult Education Academy

Since 2014, the Adult Education Academy has been hosted at the University of Würzburg in Bavaria, Germany, in the first two weeks of February. It was developed as part of the ERASMUS+ Strategic Partnerships COMPALL (2015-2018) and INTALL (2018-2021). The Adult Education Academy promotes international networks in adult education and lifelong learning, aiming to foster a connection between academic learning and the field of adult education.

During the preparatory phase and the two-week intensive programme, participants develop and refine their analytical and comparative skills in adult education in an international environment. They gain an understanding of internationally relevant educational policies in the context of lifelong learning, while strengthening their communication, teambuilding and critical thinking skills by working together in this international setting.

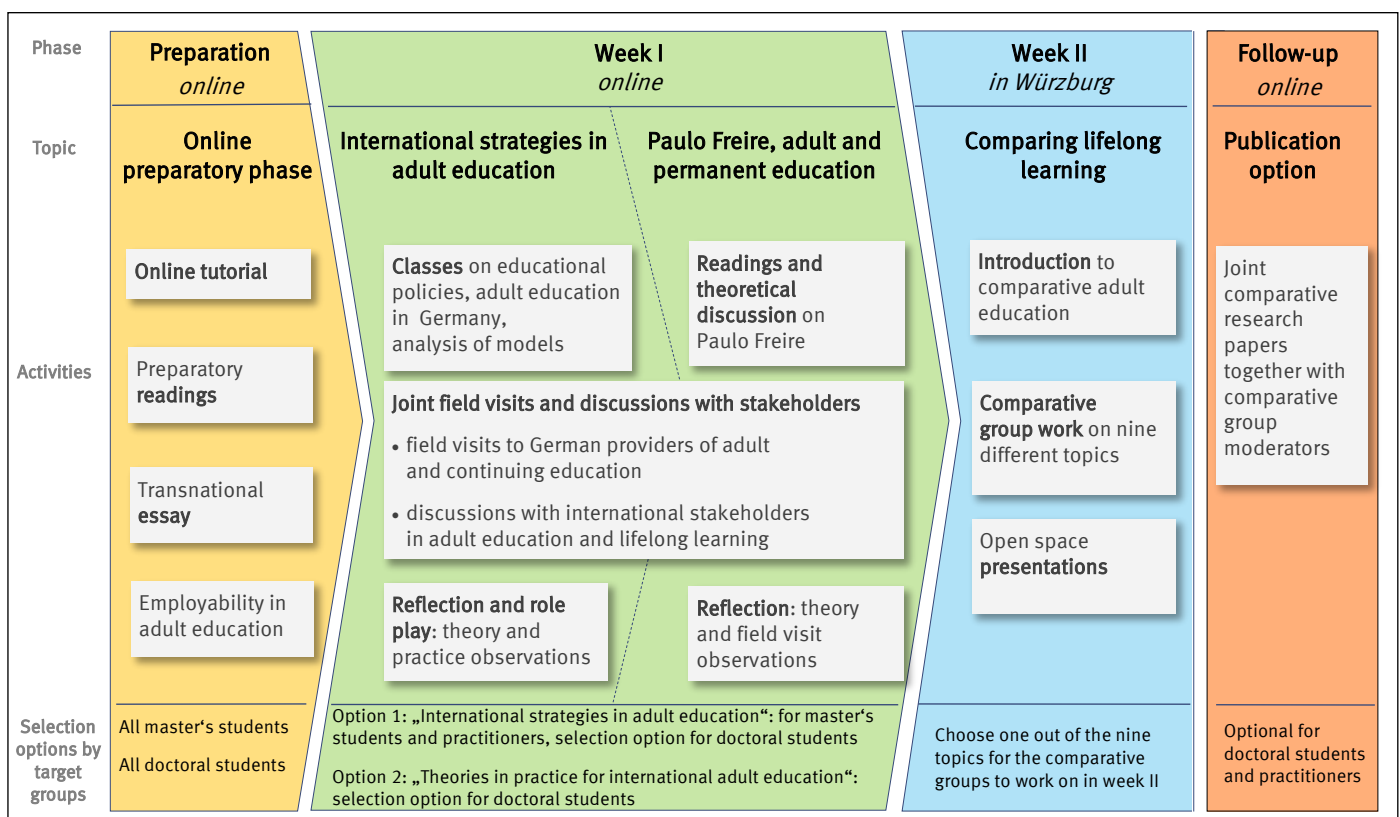
## Target groups

Master's and doctoral students in adult education, as well as colleagues from the field of adult education and lifelong learning (hereafter "practitioners") are invited to join the Adult Education Academy in Würzburg. Practitioners should have experiences in adult education (e.g. teaching, programme planning, management in institutions of adult education associations). As a minimum requirement, all participants should hold a bachelor's degree (or equivalent) in a subject related to lifelong learning.

Please be aware that participation is only possible if you complete the preparations during the preparation phase, and attend the full programme, which starts on 6 February 2023, 9:00 am CET and ends on 17 February 2023 at 5:00 pm CET.

## Structure

The Adult Education Academy is divided into an (1) online preparatory phase, (2) a two-week intensive programme featuring (2.1) an online work phase from 6-10 February 2023 & (2.2) an on-campus work phase from 13-17 February 2023 in Würzburg, and (3) an optional follow-up.



## Preparatory phase



The preparatory phase is essential for participation in the Adult Education Academy. It provides participants with the necessary knowledge and abilities for the two-week Adult Education Academy programme in February 2023. The preparatory phase, which begins in November 2022 and ends in January 2023, can be divided into three parts. During the first part, participants are divided into two groups: one consisting of master's students and practitioners and another consisting of doctoral students. The master's students and practitioners will address the topic "International strategies in adult education", whereas the doctoral students can decide whether they want to join the same group or rather work on the topic "Paulo Freire, adult and permanent education". The second part takes place within the comparative groups, whereas the third part, which addresses employability in adult education, is optional.

The preparation will take place online. Materials provided during this phase include an online tutorial, readings and group sessions for discussions. At the end of the preparatory phase, master's and doctoral students submit a transnational essay; practitioners submit a good practice presentation. The topics of the essays will depend on the comparative groups chosen by the participants. Central to the successful completion of the Adult Education Academy is the active cooperation and independent preparation of the contents and materials in the preparation phase by the participants for the two-week intensive programme in February.

## Week I – online



The group "International policies in adult education and lifelong learning" (for master's and doctoral students as well as practitioners) will focus on a critical reflection of current education policies based on a theoretical model developed by Lima/Guimarães.

The option "Paulo Freire, adult and permanent education" (for doctoral students) is based on readings and discussions of selected texts by Paulo Freire.

During the first week of the Adult Education Academy, doctoral students have the opportunity to take a class on Paulo Freire's theories for "adult and permanent education". This class is based on readings and discussions of selected texts by Paulo Freire. The doctoral students will develop a theoretical-analytical perspective and will focus on more specialised theoretical knowledge to be able to synthesise different perspectives systematically and theoretically. If they prefer, doctoral students may also join the master's students and practitioners in the class on "International strategies in adult education".

The theoretical insights in both groups (International policies in adult education and lifelong learning & Paulo Freire, adult and permanent education) will be accompanied by field visits to adult education providers in and around Würzburg. Furthermore, presentations of international adult education associations (European Association for the Education of Adults, International Council in Adult Education, DVV International) are organised to serve as case studies for practicing the analytical models or the theories discussed in the two classes.

## Week II – in Würzburg



During the second week, the participants will work in comparative groups divided by nine different topics in adult education and lifelong learning. Participants are assigned to a group prior to the Academy based on the topic of their transnational essay. On the last day of the Adult Education Academy, the results of the comparisons will be presented to all other groups.

## Certification and follow-up



After successfully participating in the Adult Education Academy and completing a transnational essay, students receive a certificate of attendance (12 ECTS). All formally registered students can opt to participate in an examination for receiving a formal transcript including a grade. Doctoral students have the possibility to get guidance for publishing a joint comparative paper after the Adult Education Academy.

## Week I: International strategies in adult education (online)



Master's students, doctoral students and practitioners working on "International strategies in adult education and lifelong learning" in the first week of the Adult Education Academy will use a policy analysis perspective. This perspective will enhance their analytical skills by integrating and analysing different perspectives. The theoretical analysis perspective is accompanied by field visits to adult education providers in and around Würzburg. Presentations of international adult education organisations (EAEA, ICAE, DVV International) will complete the programme. These insights will be applied to the analytical models as case studies.

Participants who choose this topic will be divided in two groups (announced on 6 February 2023). These group arrangements are not identical to the comparative groups. Each group will be assigned a course room. Prof. Egetenmeyer and Prof. Guimarães will be rotating to lead the groups.

### Monday, 6 February 2023

9.00-10.30	Introduction and welcoming address PROF. FRANK SCHWAB - ACADEMIC DEAN, FACULTY OF HUMAN SCIENCES, UNIVERSITY OF WÜRZBURG PROF. EGETENMEYER - UNIVERSITY PROFESSOR, PROFESSORSHIP FOR ADULT AND CONTINUING EDUCATION, UNIVERSITY OF WÜRZBURG	
10.30-11.00	<i>Coffee break</i>	
11.00-12.30	Get to know each other	BEU LEIBINGER SAAM
12.30-13.30	<i>Lunch break</i>	
13.30-15.00	Plenary lecture: The politicity of education: politics, policies, strategies— Introducing Paulo Neves Reglus Freire (1921-1997): Biography and bibliography	PROF. LIMA
15.00-15.30	<i>Coffee break</i>	
15.30-17.00	Plenary lecture: The politicity of education: politics, policies, strategies— Introducing Paulo Neves Reglus Freire (1921-1997): Biography and bibliography	PROF. LIMA

### Tuesday, 7 February 2023

9.00-10.30	<b>Group A:</b> Levels of an analysis: "Mega, macro, meso and micro" <b>Group B:</b> Adult education providers in Germany	PROF. GUIMARÃES PROF. EGETENMEYER
10.30-11.00	<i>Coffee break</i>	
11.00-12.30	<b>Group A:</b> Levels of an analysis: "Mega, macro, meso and micro" <b>Group B:</b> Adult education providers in Germany	PROF. GUIMARÃES PROF. EGETENMEYER
12.30-13.30	<i>Lunch break</i>	
13.30-15.00	<b>Group A:</b> Social policy models <b>Group B:</b> Social policy models	PROF. GUIMARÃES PROF. LIMA
15.00-15.15	<i>Coffee break</i>	
15.15.-17.00	<b>Group A:</b> Social policy models <b>Group B:</b> Social policy models	PROF. GUIMARÃES PROF. LIMA

## Week I: International strategies in adult education (online)



### Wednesday, 8 February 2023

9.00-10.30	<b>Group A:</b> Adult education providers in Germany <b>Group B:</b> Preparation for field visits	PROF. EGETENMEYER PROF. GUIMARÃES
10.30-11.00	<i>Coffee break</i>	
11.00-12.30	<b>Group A:</b> Adult education providers in Germany <b>Group B:</b> New tools for implementing and monitoring the CONFITEA Marrakesh Framework for Action	PROF. EGETENMEYER DR. VALDES COTERA
12.30-13.30	<i>Lunch break</i>	
13.30-15.00	<b>Group A:</b> Preparation for field visits <b>Group B:</b> UNESCO and ICAE - Contributions to the development of adult education and lifelong learning during the CONFITEA process	PROF. GUIMARÃES PROF. HINZEN
15.00-15.30	<i>Coffee break</i>	
15.30-17.00	<b>ALL Groups:</b> <b>Field visits to providers of adult and continuing education in Würzburg</b> <ul style="list-style-type: none"> <li>• Volkshochschule (Adult Education Centre) Würzburg and Surroundings e.V., Würzburg</li> <li>• Frankenwarte Academy, Würzburg</li> <li>• Chamber of Commerce and Industry (IHK) Würzburg-Schweinfurt, Würzburg</li> </ul>	PROF. EGETENMEYER BEU LEIBINGER SAAM

### Thursday, 9 February 2023

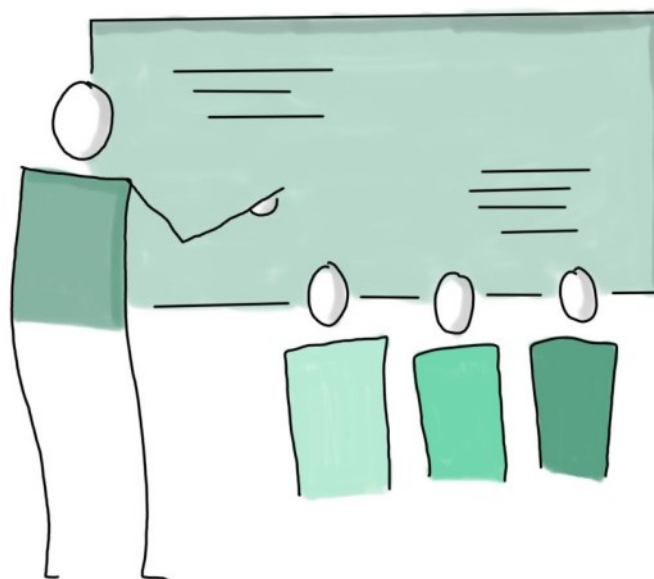
9.00-10.30	<b>Group A:</b> New tools for implementing and monitoring the CONFITEA Marrakesh Framework for Action <b>Group B:</b> Levels of an analysis: "Mega, macro, meso and micro"	DR. VALDES COTERA PROF. GUIMARÃES
10.30-11.00	<i>Coffee break</i>	
11.00-12.30	<b>Group A:</b> UNESCO and ICAE - Contributions to the development of adult education and lifelong learning during the CONFITEA process <b>Group B:</b> Levels of an analysis: "Mega, macro, meso and micro"	PROF. HINZEN PROF. GUIMARÃES
12.30-13.30	<i>Lunch break</i>	
13.30-15.00	<b>ALL GROUPS:</b> <b>Virtual field visits to international providers of adult and continuing education</b> <ul style="list-style-type: none"> <li>• <i>Prof. Søren Ehlers &amp; Dr. Shalini Singh</i> - Extension and outreach function of universities in India: University of Science &amp; Technology Meghalaya (USTM)</li> <li>• <i>Dina Soeiro &amp; Sílvia Parreiral and Carla Patrão</i> - Adult education with heart: humanistic practices with older learners in rural contexts (Letras para vida project)</li> <li>• <i>Dr. Domenico Medea</i> - The Pegaso Network system and support strategies for Adult education (PegasoNet)</li> <li>• <i>Dr. Lorenzo Corsellini</i> - Professional figures involved in Social co-operation (PegasoNet)</li> </ul>	PROF. EGETENMEYER BEU LEIBINGER SAAM
15.00-15.30	<i>Coffee break</i>	
15:30-17.00	Guided-Würzburg-Tour	

## Week I: International strategies in adult education (online)



### Friday, 10 February 2023

9.00-10.30	<b>Group A:</b> Role play: Social policy models and adult education practice <b>Group B:</b> Role play: Social policy models and adult education practice	PROF. EGETENMEYER PROF. GUIMARÃES
10.30-11.00	<i>Coffee break</i>	
11.00-12.30	<b>Group A:</b> Role play: Social policy models and adult education practice <b>Group B:</b> Role play: Social policy models and adult education practice	PROF. EGETENMEYER PROF. GUIMARÃES
12.30-13.30	<i>Lunch break</i>	
13.30-15.00	<b>ALL GROUPS:</b> <b>Field visits to international adult and continuing education associations</b> <ul style="list-style-type: none"> <li>• <i>Esther Hirsch</i> – Adult education and international cooperation – Position and strategies of DVV International (DVV International)</li> <li>• <i>Gina Ebner</i> – European policy and advocacy for adult learning and education (EAEA)</li> <li>• <i>Katarina Popović</i> – ICAE and adult education in the post-COVID-19 times (ICAE)</li> </ul>	PROF. EGETENMEYER BEU LEIBINGER SAAM
15.00-15.30	<i>Coffee break</i>	
15.30-17.00	<b>Group A</b> and <b>Group B:</b> Reflection of field visits	PROF. EGETENMEYER





## Week I: Paulo Freire, adult and permanent education (online)



In this heavily theory-based class for doctoral students, the participants focus on Paulo Freire's theories for international adult education. The participants will develop a theoretical-analytical perspective.

They will focus on much more specialised theoretical knowledge to be able to synthesise different perspectives systematically and theoretically. The theoretical insights during the first week are accompanied by field visits to adult education providers in and around Würzburg. Furthermore, presentations of international adult education associations are organised (e.g. EAEA, ICAE, UNESCO Institution for Lifelong Learning).

### Monday, 6 February 2023

9.00-10.30	Introduction and welcoming address PROF. FRANK SCHWAB - ACADEMIC DEAN, FACULTY OF HUMAN SCIENCES, UNIVERSITY OF WÜRZBURG PROF. EGETENMEYER - UNIVERSITY PROFESSOR, PROFESSORSHIP FOR ADULT AND CONTINUING EDUCATION, UNIVERSITY OF WÜRZBURG	
10.30-11.00	<i>Coffee break</i>	
11.00-12.30	Get to know each other	BEU LEIBINGER SAAM
12.30-13.30	<i>Lunch break</i>	
13.30-15.00	Plenary lecture: The politicity of education: politics, policies, strategies— Introducing Paulo Neves Reglus Freire (1921-1997): Biography and bibliography	PROF. LIMA
15.00-15.30	<i>Coffee break</i>	
15.30-17.00	Plenary lecture: The politicity of education: politics, policies, strategies— Introducing Paulo Neves Reglus Freire (1921-1997): Biography and bibliography	PROF. LIMA

### Tuesday, 7 February 2023

9.00-10.30	Why studying Freire today? The contributions of Freire to policy studies in ALE/LLL: critical encounters with Ettore Gelpi and Ivan Illich	PROF. LIMA
10.30-11.00	<i>Coffee break</i>	
11.00-12.30	Why studying Freire today? The contributions of Freire to policy studies in ALE/LLL: critical encounters with Ettore Gelpi and Ivan Illich	PROF. LIMA
12.30-13.30	<i>Lunch break</i>	
13.30-15.00	Adult education providers in Germany	PROF. EGETENMEYER
15.00-15.30	<i>Coffee break</i>	
15.30-17.00	Group work on Freire	PROF. LIMA

## Week I: Paulo Freire, adult and permanent education (online)



### Wednesday, 8 February 2023

9.00-10.30	The opus magnum: the pedagogy of the oppressed and its main concepts. Radical democracy, liberation and participation; modernization and development. Extension or communication? Education as the practice of freedom.	PROF. LIMA
10.30-11.00	<i>Coffee break</i>	
11.00-12.30	The opus magnum: the pedagogy of the oppressed and its main concepts. Radical democracy, liberation and participation; modernization and development. Extension or communication? Education as the practice of freedom.	PROF. LIMA
12.30-13.30	<i>Lunch break</i>	
13.30-15.00	Revisiting the pedagogy of the oppressed to analyse adult learning and education	PROF. LIMA
15.00-15.30	<i>Coffee break</i>	
15.30-17.00	<p><b>ALL Groups:</b>  <b>Field visits to providers of adult and continuing education in Würzburg</b></p> <ul style="list-style-type: none"> <li>• Volkshochschule (Adult Education Centre) Würzburg and Surroundings e.V., Würzburg</li> <li>• Frankenwarte Academy, Würzburg</li> <li>• Chamber of Commerce and Industry (IHK) Würzburg-Schweinfurt, Würzburg</li> </ul>	PROF. EGETENMEYER BEU LEIBINGER SAAM

### Thursday, 9 February 2023

9.00-10.30	Popular adult education and critical literacy: reading the world and reading the words	PROF. LIMA
10.30-11.00	<i>Coffee break</i>	
11.00-12.30	Paulo Freire as public manager of education in the city of São Paulo: "Pedagogy of the city"	PROF. LIMA
12.30-13.30	<i>Lunch break</i>	
13.30-15.00	<p><b>ALL GROUPS:</b>  <b>Virtual field visits to international providers of adult and continuing education</b></p> <ul style="list-style-type: none"> <li>• Prof. Søren Ehlers &amp; Dr. Shalini Singh - Extension and outreach function of universities in India: : University of Science &amp; Technology Meghalaya (USTM)</li> <li>• Dina Soeiro &amp; Sílvia Parreiral and Carla Patrão - Adult education with heart: humanistic practices with older learners in rural contexts (Letras para vida project)</li> <li>• Dr. Domenico Medea - The Pegaso Network system and support strategies for Adult education (PegasoNet)</li> <li>• Dr. Lorenzo Corsellini - Professional figures involved in Social co-operation (PegasoNet)</li> </ul>	PROF. EGETENMEYER BEU LEIBINGER SAAM
15.00-15.30	<i>Coffee break</i>	
15:30-17.00	Guided-Würzburg-Tour	

## Week I: Paulo Freire, adult and permanent education (online)



Friday, 10 February 2023

9.00-10.30	The pedagogy of freedom: teaching and learning	PROF. LIMA
10.30-11.00	<i>Coffee break</i>	
11.00-12.30	The pedagogy of freedom: teaching and learning	PROF. LIMA
12.30-13.30	<i>Lunch break</i>	
13.30-15.00	<p><b>ALL GROUPS:</b>  <b>Field visits to international adult and continuing education associations</b></p> <ul style="list-style-type: none"> <li>• <i>Esther Hirsch</i> – Adult education and international cooperation – Position and strategies of DVV International (DVV International)</li> <li>• <i>Gina Ebner</i> – European policy and advocacy for adult learning and education (EAEA)</li> <li>• <i>Katarina Popović</i> – ICAE and adult education in the post-COVID-19 times (ICAE)</li> </ul>	PROF. EGETENMEYER BEU LEIBINGER SAAM
15.00-15.30	<i>Coffee break</i>	
15.30-17.00	Reflection of virtual field visits in a freirian perspective	PROF. LIMA

## The moderators and lecturers of week I



### Prof. Regina Egetenmeyer, Julius-Maximilian University Würzburg, Germany

Prof. Regina Egetenmeyer, Ph.D., works on questions of lifelong learning, informal learning, and professionalisation in adult education and mobility for learning purposes. Since 2013, she holds the Professorship for Adult and Continuing Education at the University of Würzburg. She is a visiting Professor at the International Institute of Adult and Lifelong Education, New Delhi. Her research emphasis is on international comparative research in adult education and lifelong learning.

### Prof. Licínio C. Lima, University of Minho, Portugal

Prof. Licínio C. Lima, Ph.D., is Professor of Sociology of Education and Educational Administration at the Department of Social Sciences of Education at the University of Minho. He was Head of Department (1998-2004), Head of the Unit for Adult Education (1984-2004), Director of the Research Centre for Education and Psychology (1994-1997) and Director of the Ph.D. in Education. Various European and Brazilian universities hosted him as a guest professor. Further is he an author of many academic works, which are published in thirteen countries, including more than thirty books.



### Prof. Paula Guimarães, University of Lisbon, Portugal

Prof. Paula Guimarães, Ph.D., is an assistant professor at the Instituto de Educação, Universidade de Lisboa (Portugal) since 2012. She holds a Ph.D. in (adult) education policies and still researches this topic at a local, national and supra/international levels. Her research interests also include the links between adult education policies and adult educators work and jobs.

## Week II: Comparative studies in adult education and lifelong learning (hybrid)



Prior to the Adult Education Academy, all master's and doctoral students prepare a transnational essay that is linked to the topic of the comparative group they choose to work in. The transnational essay will comprise the perspective on adult education in their home countries. The writing process will be guided on WueCampus moodle platform by the group moderators. The second week focuses on comparing the contexts and countries identified. The comparative group work will result in an open space presentation on Friday showing the results of the comparison.

### Room Overview for the Comparative Groups (CG-rooms)

Comparative Group 1   Room: Z6, 2.007	Comparative Group 6   Room: Z6, 2.002
Comparative Group 2   Room: Z6, 2.005	Comparative Group 7   Room: Z6, 2.006
Comparative Group 3   Room: Z6, 2.004	Comparative Group 8   Room: Z6, 2.011
Comparative Group 4   Room: Z6, 2.012	Comparative Group 9   Room: Z6, 2.003
Comparative Group 5   Room: Z6, 1.006	all CG-rooms are located in the Z6 building

### Monday, 13 February 2023

			ROOM
9.00-10.30	Introduction into comparative adult education	PROF. EGETENMEYER	TO BE ANNOUNCED
10.30-11.00	<i>Coffee break</i>		
11.00-12.30	Comparative group work: Introduction	IN GROUPS	CG-ROOMS
12.30-13.30	<i>Lunch break</i>		
13.30-15.00	Comparative group work: Participant presentations	IN GROUPS	CG-ROOMS
15.00-15.30	<i>Coffee break</i>		
	Good practice presentations		
	<ul style="list-style-type: none"> <li>• <i>Dr. Jostina Dhimitri</i> – Continuing professional development for being an effective and innovative adult geography teacher in Albania (CG1)</li> </ul>	PROF. PEJATOVIĆ	CG-ROOM 1
	<ul style="list-style-type: none"> <li>• <i>Tatia Gerkenashvili, Tamari Gelashvili &amp; Nino Babalashvili</i> – Internal standard for quality assurance for network member ALE centers in Georgia (CG2, CG6 &amp; CG9)</li> </ul>	PROF. HINZEN	CG-ROOM 6
15.30-16.15	<ul style="list-style-type: none"> <li>• <i>Dr. Ronke Ojo</i> – Adult literacy, social participation and active aging in Lagos mainland local government of Lagos State (CG5)</li> </ul>	PROF. TOGNI	CG-ROOM 5
	<ul style="list-style-type: none"> <li>• <i>Prof. Garba Mohammed Tofa</i> – Kano the learning city: A peep into distance education centres in Kano state, Nigeria (CG7)</li> </ul>	PROF. EMMANUEL	CG-ROOM 7
	<ul style="list-style-type: none"> <li>• <i>Ola Isa</i> – Preparing palestinian community-based ALE managers and adult educators for hybrid professionalism (CG4)</li> </ul>	PROF. GUIMARAES DR. BREITSCHWERDT	CG-ROOM 4
	<ul style="list-style-type: none"> <li>• <i>Dr. Omowunmi Sola Agboola</i> – Gender Impact in Adult Education (CG8)</li> </ul>	PROF. ALVES	CG-ROOM 8

## Week II: Comparative studies in adult education and lifelong learning (hybrid)



### Monday, 13 February 2023

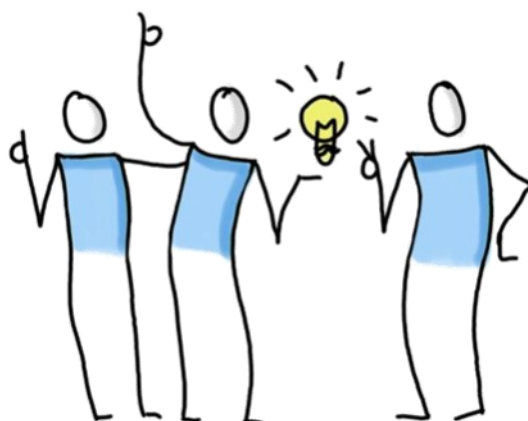
#### ROOM

Monday, 13 February 2023		ROOM	
Good practice presentations			
16.15-17.00	• <i>Dr. Edith Hammer</i> — Universities' role in promoting lifelong learning and community engagement (CG1)	PROF. PEJATOVIĆ	CG-ROOM 1
	• <i>Said Abu Ghazza</i> — Supporting women development in adult education in the community centers and its role in enhancing educated women through personal and employment development programme (CG8)	BEU	CG-ROOM 8
	• <i>Dr. Oluwatoyin Akinola</i> — Legislation and finance of quality assurance policies for adults in Nigerian universities: Perspectives and experiences of a practitioner (CG6)	PROF. NÉMETH	CG-ROOM 6
	• <i>Joseph Badokufa Bulugu</i> — SERVICE-LEARNING: an educational approach for enriching adult learner's experience for building sustainable communities in Tanzania (CG2)	DR. SINGH	CG-ROOM 2
	• <i>Sadife Cinkir</i> — Lifelong learning as a tool for shaping future societies from the perspective of Turkey (CG7)	PROF. EMMANUEL	CG-ROOM 7
18.00	Cultural evening	IN GROUPS	

### Tuesday, 14 February 2023

#### ROOM

9.00-12.30	Comparative group work: Participant presentations	IN GROUPS	CG-ROOMS
12.30-13.30	<i>Lunch break</i>		
13.30-14.30	Comparative group work: Participant presentations	IN GROUPS	CG-ROOMS
14.30-15.30	<i>Coffee break and travel to the Neubaikirche</i>		
15.30-18.00	Celebration of the 10th anniversary of the Adult Education Academy (prior online registration required)	NEUBAUKIRCHE	



## Week II: Comparative studies in adult education and lifelong learning (hybrid)

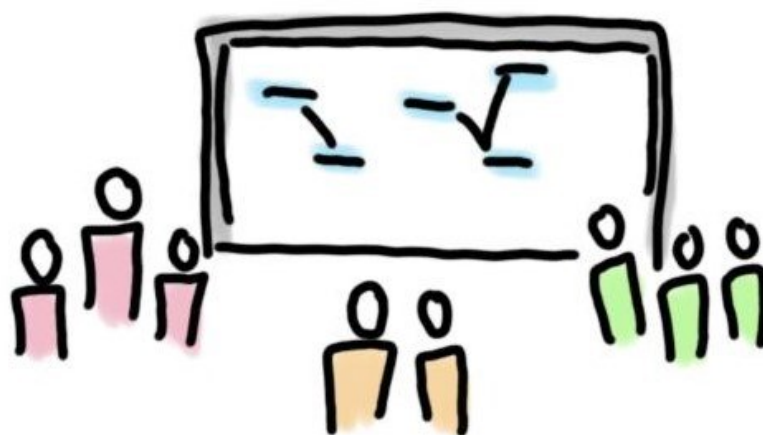


Wednesday, 15 February 2023			ROOM
9.00-10.30	Comparative group work	IN GROUPS	CG-ROOMS
10.30-11.00	<i>Coffee break</i>		
11.00-12.30	Comparative group work	IN GROUPS	CG-ROOMS
12.30-13.30	<i>Lunch break</i>		
	Good practice presentations		
13.30-14.15	• <i>Nadya Subramaniam</i> — Digital upskilling for women-led micro, small and medium enterprises in Malaysia (CG1)	PROF. FEDELI	CG-ROOM 1
	• <i>Dr. Usman Abba Idris</i> — Second chance education and artisanal skill building through non formal education outlets in Kano state, Nigeria (CG2)	DR. SINGH	CG-ROOM 2
	• <i>Melita Phachulia</i> — Georgia and the digital resilience (CG7)	PROF. SCHMIDT-LAUFF	CG-ROOM 7
	• <i>Rana Khoury</i> — Unleashing potential and hope: Arts education for adult women in Palestine (CG8)	PROF. ALVES	CG-ROOM 8
	• <i>Dr. Leslie Cordie</i> — Developing community educators as part of a land-grant institutional mission: Alabama cooperative extension system (ACES) (CG4)	PROF. GUIMARÃES DR. BREITSCHWERDT	CG-ROOM 4
	Good practice presentations		
14.15-15.00	• <i>Ana Isabel Delgado Dominguez</i> — YouthBuild: program of community-based learning for education for sustainable development of youth immigrant in Ecuador (CG6)	PROF. NÉMETH	CG-ROOM 6
	• <i>Dr. Adeola Afonja</i> — Understanding the issues of inclusion of persons with disabilities in education in Nigeria: The way forward (CG9)	PROF. SCHREIBER-BARSCH	CG-ROOM 9
	• <i>Dr. Simone Laqua O'Donnell</i> — How to do it (better): A stocktaking exercise in lifelong learning and distance learning from a humanities perspective (CG7)	PROF. SCHMIDT-LAUFF	CG-ROOM 7
	• <i>Dr. Auwalu Halilu</i> — A review of the vocational acquisition for adult learners - A case study of the department of adult education and community services Bayero University Kano, Nigeria (CG2)	DR. SINGH	CG-ROOM 2
	• <i>Dr. Oluwayemisi Ayedun Obashoro-John</i> — Policy, legislation and financing of ALE in a lifelong learning perspective: The Nigerian experience (CG3)	PROF. MIKULEC	CG-ROOM 3
• <i>Dr. Adeola Ogunrin</i> — Moribund, resuscitated & ongoing: Continuing education practices for nurturing young adults in Nigeria (CG4)	PROF. GUIMARÃES DR. BREITSCHWERDT	CG-ROOM 4	
15.00-15.30	<i>Coffee break</i>		
15.30-17.00	Comparative group work	IN GROUPS	CG-ROOMS
17.00-17.30	Information on examination and grading possibilities	PROF. EGETENEMEYER LEIBINGER	TO BE ANNOUNCED

## Week II: Comparative studies in adult education and lifelong learning (hybrid)



Thursday, 16 February 2023			ROOM
9.00-10.30	Comparative group work	IN GROUPS	CG-ROOMS
10.30-11.00	<i>Coffee break</i>		
11.00-12.30	Comparative group work	IN GROUPS	CG-ROOMS
12.30-13.30	<i>Lunch break</i>		
13.30-15.00	Comparative group work	IN GROUPS	CG-ROOMS
15.00-15.30	<i>Coffee break</i>		
15.30-17.00	Comparative group work	IN GROUPS	CG-ROOMS
17.00-17.30	Information about the possibility of publication (doctoral students and practitioner)	PROF. EGETENMEYER PROF. PEJATOVIĆ	TO BE ANNOUNCED



## Week II: Comparative group presentations (hybrid)



**Friday, 17. February 2023**

**ROOM**

9.00-9.15	Welcome to the group presentation	PROF. EGETENMEYER	TO BE ANNOUNCED
9.15-10.40	Presentations of results of comparative groups— groups 1, 2 & 3		
9.15-9.40	Comparative group 1 — Audience: groups 4 & 5 Comparative group 2 — Audience: groups 6 & 7 Comparative group 3 — Audience: groups 8 & 9		ZOOM ROOM CG 1   Z6, 2.007 ZOOM ROOM CG 2   Z6, 2.005 ZOOM ROOM CG 3   Z6, 2.004
9.45-10.10	Comparative group 1 — Audience: groups 8 & 9 Comparative group 2 — Audience: groups 4 & 5 Comparative group 3 — Audience: groups 6 & 7		ZOOM ROOM CG 1   Z6, 2.007 ZOOM ROOM CG 2   Z6, 2.005 ZOOM ROOM CG 3   Z6, 2.004
10.15-10.40	Comparative group 1 — Audience: groups 6 & 7 Comparative group 2 — Audience: groups 8 & 9 Comparative group 3 — Audience: groups 4 & 5		ZOOM ROOM CG 1   Z6, 2.007 ZOOM ROOM CG 2   Z6, 2.005 ZOOM ROOM CG 3   Z6, 2.004
10.40-11.10	<i>Coffee break</i>		
11.10-12.35	Presentations of results of comparative groups— groups 4, 5 & 6		
11.10-11.35	Comparative group 4 — Audience: groups 1 & 2 Comparative group 5 — Audience: groups 3 & 7 Comparative group 6 — Audience: groups 8 & 9		ZOOM ROOM CG 4   Z6, 2.012 ZOOM ROOM CG 5   Z6, 1.006 ZOOM ROOM CG 6   Z6, 2.002
11.40-12.05	Comparative group 4 — Audience: groups 8 & 9 Comparative group 5 — Audience: groups 1 & 2 Comparative group 6 — Audience: groups 3 & 7		ZOOM ROOM CG 4   Z6, 2.012 ZOOM ROOM CG 5   Z6, 1.006 ZOOM ROOM CG 6   Z6, 2.002
12.10-12.35	Comparative group 4 — Audience: groups 3 & 7 Comparative group 5 — Audience: groups 8 & 9 Comparative group 6 — Audience: groups 1 & 2		ZOOM ROOM CG 4   Z6, 2.012 ZOOM ROOM CG 5   Z6, 1.006 ZOOM ROOM CG 6   Z6, 2.002
12.35-13.35	<i>Lunch break</i>		
13.35-15.00	Presentations of results of comparative groups— groups 7, 8 & 9		
13.35-14.00	Comparative group 7 — Audience: groups 1 & 2 Comparative group 8 — Audience: groups 3 & 4 Comparative group 9 — Audience: groups 5 & 6		ZOOM ROOM CG 7   Z6, 2.006 ZOOM ROOM CG 8   Z6, 2.011 ZOOM ROOM CG 9   Z6, 2.003
14.05-14.30	Comparative group 7 — Audience: groups 5 & 6 Comparative group 8 — Audience: groups 1 & 2 Comparative group 9 — Audience: groups 3 & 4		ZOOM ROOM CG 7   Z6, 2.006 ZOOM ROOM CG 8   Z6, 2.011 ZOOM ROOM CG 9   Z6, 2.003
14.35-15.00	Comparative group 7 — Audience: groups 3 & 4 Comparative group 8 — Audience: groups 5 & 6 Comparative group 9 — Audience: groups 1 & 2		ZOOM ROOM CG 7   Z6, 2.006 ZOOM ROOM CG 8   Z6, 2.011 ZOOM ROOM CG 9   Z6, 2.003
15.00-15.30	<i>Coffee break</i>		
15.30-16.15	Evaluation	IN GROUPS	CG-ROOMS
16.15-17.00	Closing session	PROF. EGETENMEYER	TO BE ANNOUNCED
18.00	Franconian evening		BÜRGERSPITAL



# Comparative groups overview



Topic	Moderators
<b>Group 1:</b> The three pillars of the third mission of higher education systems: “Continuing education”, “technology transfer & innovation” and “social engagement”	<i>Prof. Monica Fedeli, University of Padova, Italy</i> <i>Dr. Concetta Tino, University of Padova, Italy</i> <i>Prof. Aleksandra Pejatović, University of Belgrade, Serbia</i>
<b>Group 2:</b> Resource mobilisation for the education of adults	<i>Prof. Søren Ehlers, University of Science &amp; Technology, Meghalaya, India</i> <i>Dr. Shalini Singh, University of Science &amp; Technology, Meghalaya, India</i> <i>Prof. Séamus O’Tauma, School of Government &amp; Politics at University College Cork, Ireland</i>
<b>Group 3:</b> Implementation of the European agenda for adult learning	<i>Prof. Borut Mikulec, University of Ljubljana, Slovenia</i> <i>Tadej Košmerl, University of Ljubljana, Slovenia</i> <i>Prof. Lucas Pacheco Campos, Federal University of Juiz de Fora, Brazil</i>
<b>Group 4:</b> Activities, competences and hybrid professionalism in adult education	<i>Prof. Paula Guimarães, University of Lisbon, Portugal</i> <i>Dr. Lisa Breitschwerdt, Julius-Maximilian-University Würzburg, Germany</i>
<b>Group 5:</b> Active ageing - from lifelong learning to innovative professionalisation	<i>Prof. Vanna Boffo, University of Florence, Italy</i> <i>Dr. Glenda Galeotti, University of Florence, Italy</i> <i>Prof. Fabio Togni, University of Florence, Italy</i>
<b>Group 6:</b> Policy, legislation and financing of ALE in a lifelong learning perspective: Arguments, examples and experiences	<i>Prof. Balázs Németh, University of Pécs, Hungary</i> <i>Prof. (H) Dr. Dr. h. c. mult. Heribert Hinzen, University of Pécs, Hungary</i>
<b>Group 7:</b> Digitalisation in adult education and learning	<i>Prof. Sabine Schmidt-Lauff, Helmut Schmidt University Hamburg, Germany</i> <i>Prof. Emmanuel Jean Francois, Ohio University, United States of America</i>
<b>Group 8:</b> Adult education and gender - mature women in higher education	<i>Prof. Natália Alves, University of Lisbon, Portugal</i> <i>Ana Guimarães Duarte, University of Lisbon, Portugal</i> <i>Vanessa Beu, Julius-Maximilian-University Würzburg, Germany</i>
<b>Group 9:</b> Adult learning and education for all?! Issues of inclusion with regard to disability in the limelight	<i>Prof. Silke Schreiber-Barsch, University of Duisburg-Essen, Germany</i> <i>Jessica Kleinschmidt, Helmut Schmidt University Hamburg, Germany</i> <i>Lukas Eble, University of Duisburg-Essen, Germany</i>

## Comparative groups overview



### Comparative Group 1:

The three pillars of the third mission of higher education systems: “Continuing education”, “technology transfer & innovation” and “social engagement”



**Prof. Monica Fedeli, University of Padova, Italy**

Prof. Monica Fedeli, Ph.D., is currently Pro-Rector at Third Mission and full professor at University of Padova. She has been Adjunct Professor at Boston University, at Michigan State University, at Julius Maximilian University of Würzburg, Germany, and Visiting Professor at California University Berkeley, School of Education. Her research interests include: active teaching, participatory teaching and learning, faculty development, university business dialogue, women leadership, and professional development. She published more than 70 articles, books, and book chapters in variety of national and international journals, and book series.

**Co-moderator: Prof. Aleksandra Pejatović, University of Belgrade, Serbia**

As head of the "Chair of Andragogy", Prof. Aleksandra Pejatović, Ph.D., held one of the oldest and most renowned chairs for Adult and Continuing Education at a European university for many years. Her research interest are issues of competence and professional development, quality management and evaluation in adult and continuing education. During the winter term of 2022/2023, she is holding a guest professorship at the University of Würzburg.



**Co-moderator: Dr. Concetta Tino, University of Padova, Italy**

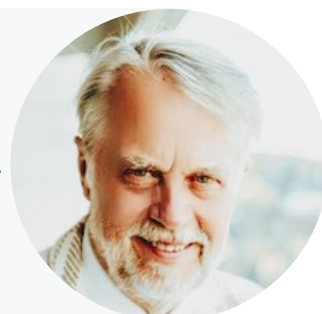
Currently, Concetta Tino, Ph.D., is an Adjunct Professor at University of Padua. Her main research interests are: teachers professional development; Work-Related Learning; formative assessment and feedback; the development of soft skills and professional competences for students and teachers within Work-Related Learning experiences; Women leadership. She published many articles, books and chapters.

### Comparative Group 2:

Resource mobilisation for the education of adults

**Prof. Søren Ehlers, University of Science & Technology, Meghalaya, India**

Prof. Søren Ehlers, Ph.D., is Adjunct Professor, University of Science & Technology, Meghalaya and Distinguished Professor at the International Institute for Adult & Lifelong Education, India. He has been teaching and doing research for several decades at Aarhus University Denmark and in other Danish institutions. His research interests include resource mobilisation for the education of adults, employability, international organisations, policy analysis and comparative studies.



## Comparative groups overview



### Dr. Shalini Singh, University of Science & Technology, Meghalaya, India

Shalini Singh, Ph.D., is Adjunct Professor, University of Science & Technology, Meghalaya, India and Guest Researcher at the Helmut Schmidt University of the Federal Armed Forces, Germany. She is a senior fellow at the International Institute for Adult & Lifelong Education, India. Her research interests include resource mobilisation for the education of adults, employability, international organisations, policy analysis and comparative studies.

### Co-Moderator: Prof. Séamus Ó Tuama, University College Cork, Ireland

Séamus Ó Tuama, Ph.D., is Chair of the ASEM Education and Research Hub for Lifelong Learning, an official network on lifelong learning research an official programme of ASEM. He sits on the Advisory Group for Universities' Contributions to lifelong learning led by UNESCO Institute for Lifelong Learning and Shanghai Open University. He is a member of the Singapore Workforce Development Applied Research Fund Expert Review Panel, the Editorial Board of Journal of Continuing Higher Education, Cork UNESCO learning city steering group, the Board of the Higher Education Research Centre, Dublin City University, the George Moore Scholars (Ireland Funds) panel and is an External Examiner at Trinity College Dublin.



## Comparative Group 3:

## Implementation of the European agenda for adult learning

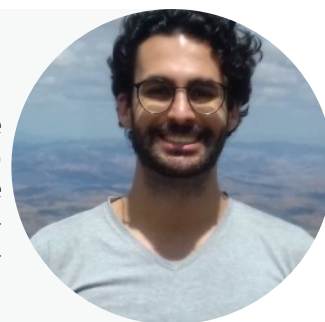


### Prof. Borut Mikulec, University of Ljubljana, Slovenia

Prof. Borut Mikulec, Ph.D., is associate professor of adult and continuing education at the Department of Educational Sciences at the University of Ljubljana. His research areas include the role of transnational organisations in education policy, international and comparative adult education, the policy in adult education, professionalisation of adult educators, continuing vocational education and training, and citizenship education.

### Co-Moderator: Prof. Lucas Pacheco Campos, Federal University of Juiz de Fora, Brazil

Lucas Pacheco Campos, Ph.D., is an Assistant Professor at the Federal University of Juiz de Fora as well as a Ph.D. student in Public Policies and Human Development at Rio de Janeiro State University in partnership with the Institute of Education, University of Lisbon. He holds a Masters Degree in Administration (emphasis in Public Administration) and graduated at Universidade Federal Fluminense. His research interests include the relationships between the State, civil society and educational public policies.



### Co-Moderator: Tadej Košmerl, University of Ljubljana, Slovenia

Tadej Košmerl is a Ph.D. student and teaching assistant for adult education at the Department of Educational Sciences, Faculty of Arts, University of Ljubljana. His research interests include adult learning and education policy, comparative education and education for sustainable development.

## Comparative groups overview



### Comparative Group 4: Activities, competences and hybrid professionalism in adult education



**Prof. Paula Guimarães, University of Lisbon, Portugal**

Prof. Paula Guimarães, Ph.D., is an assistant professor at the Instituto de Educação, Universidade de Lisboa (Portugal) since 2012. She holds a Ph.D. in (adult) education policies and still researches this topic at a local, national and supra/international levels. Her research interests also include the links between adult education policies and adult educators work and jobs.

**Co-moderator: Dr. Lisa Breitschwerdt, Julius-Maximilian University of Würzburg, Germany**

Lisa Breitschwerdt, Ph.D., is a research assistant at the Professorship of Adult and Continuing Education at the Julius-Maximilian-University of Würzburg. She is working on professionalisation in adult and continuing education in a multi-level perspective focusing on the interdependencies between social structures, umbrella organisations, organisations and professional staff.



### Comparative Group 5: Active ageing - from lifelong learning to innovative professionalisation

**Prof. Vanna Boffo, University of Florence, Italy**

Prof. Vanna Boffo, Ph.D., is Full Professor in Adult Education and Head of the Department of Education, Languages, Interculture, Literatures and Psychology at the University of Florence, where she is the Coordinator of Education and Psychology Doctoral Course. Her research focuses on the transition to work at the Higher Education level.



**Co-moderator: Dr. Glenda Galeotti, University of Florence, Italy**

Glenda Galeotti, Ph.D., is Researcher in Adult and Continuing Education at the Department of Education, Languages, Interculture, Literatures and Psychology of University of Florence, Italy. Her main research interests are focused on: education for social innovation and local development, heritage education, career education and guidance.

## Comparative groups overview



### Co-moderator: Prof. Fabio Togni , University of Florence, Italy

Prof. Fabio Togni, Ph.D., is Professor in General and Social Pedagogy at the Department of Education, Languages, Interculture, Literatures and Psychology, University of Florence, Italy. His research focuses on the Quality Education at the Higher Education level.



## Comparative Group 6: Policy, legislation and financing of ALE in a lifelong learning perspective: Arguments, examples and experiences

### Prof. Balázs Németh, University of Pécs, Hungary

Prof. Balázs Németh, Ph.D., is a researcher on European adult and lifelong learning policy development and comparative adult education. He is an associate professor and reader in Adult Learning and Education at the University of Pécs. He is also a founding member of the Hungarian University Lifelong Learning Network (MELLearn) and represents the University of Pécs in the European Universities Continuing Education Network (EUCEN) and in the European Association for the Education of Adults (EAEA). His research focus is on comparative analysis of policies of the member states of the EU on adult and lifelong learning. Further research topics of his are: Politics and adult education; comparative adult education; history of modern European adult education and learning city-region developments.



### Prof.(H) Dr. Dr. h. c. mult. Heribert Hinzen, University of Pécs, Hungary

Prof. Heribert Hinzen, Ph.D., is a senior consultant on adult education and lifelong learning for sustainable development. He worked for DVV International for almost four decades, both in headquarters and in offices in Sierra Leone, Hungary and Lao PDR. He is an Honorary Professor at the University of Pécs, and teaches comparative adult education at the University of Würzburg. He has served as Vice-President of the ICAE and the EAEA, and is currently Vice-President of the global network for Promoting, Interrogating and Mobilising Adult learning and education (PIMA). He was a member of the CONFINTEA VI Consultative Group, the UN Literacy Decade Expert Group, and a delegate to the World Education Fora of 2000 and 2015. He is an Honorary Fellow of the UNESCO Institute for Lifelong Learning (UIL) and a member of the Editorial Board of the International Review of Education – Journal of Lifelong Learning.



For more information on the moderators as well as on each comparative group check out our moderator profiles:

[www.paedagogik.uni-wuerzburg.de/lifelonglearning/adult-education-academy-2023/moderator-profiles/](http://www.paedagogik.uni-wuerzburg.de/lifelonglearning/adult-education-academy-2023/moderator-profiles/)

## Comparative groups overview



### Comparative Group 7: Digitalisation in adult education and learning

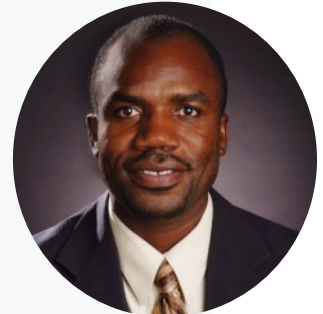
#### Prof. Sabine Schmidt-Lauff, Helmut Schmidt University Hamburg, Germany



Prof. Sabine Schmidt-Lauff, Ph.D., holds the Professorship for Continuing Education and Lifelong Learning at HSU since 2016. Her main research interest is on professionalisation and professionalism in adult education, professional identity, and international-comparative research on lifelong learning. Transformative digital competences for study and work in Higher Education is another key aspect of her current work. A special focus of her research and numerous national as well as international publications is on temporal and time-related challenges for learning throughout the whole lifespan in a globalised and virtualised modern world. From 2001-2004, she was head of one of the first pedagogical ERASMUS intensive programmes for adult education at Humboldt University Berlin ('European Perspectives on Lifelong Learning and the Education of Adults').

#### Dr. Emmanuel Jean Francois, Ohio University, United States of America

Emmanuel Jean Francois, Ph.D., is Associate Professor of Comparative and International Education at Ohio University. He is the Coordinator of the Doctoral program in Educational Administration/Leadership, as well as the doctoral specialisation in Comparative and International Educational Leadership. His most recent books include: "Transnational perspectives on innovation in teaching and learning technologies" (2018), Perspectives in Transnational Higher Education (2016), "Building global education with a local perspective: An introduction to global higher education (2015)", "Financial sustainability for non-profit organizations (2014)", "Trans-cultural blended learning and teaching in post-secondary education (2012)", "DREAM model to start a small business (2011)", and "Global education on trial by U.S. college professors (2010)". He is the Editor-in-Chief of the peer-reviewed journal The African Symposium, the Chair of the African Educational Research Network (AERN), and is the Past-President of the Transnational Education and Learning Society (TELS).



### Comparative Group 8: Adult education and gender - mature women in higher education



#### Prof. Natália Alves, University of Lisbon, Portugal

Prof. Natália Alves, Ph.D., is an associate professor at the Institute of Education, University of Lisbon. She holds a Ph.D. on Sociology of Education. Her main fields of research are school to work transitions and IVET and CVET policies, forms of provision, and practices.

## Comparative groups overview



### Co-moderator: Ana Guimarães Duarte, M.Sc. University of Lisbon, Portugal

Ana Guimarães Duarte is a Ph.D. student of adult education at the Institute of Education, University of Lisbon. She has worked as a project manager and adult educator in vocational and community education. Her current research interests include experiential learning and learning trajectories of migrant women.



### Co-moderator: Vanessa Beu, M.A., Julius-Maximilian-University Würzburg, Germany

Vanessa Beu is a research fellow at the Professorship of Adult and Continuing Education at the University of Würzburg, Germany. She works on the analysis of needs in vocational education and training at individual, collective and organisational level. Her research is on vocational and in-company continuing education.

## Comparative Group 9: Adult learning and education for all?! Issues of inclusion with regard to disability in the limelight



### Prof. Dr. Silke Schreiber-Barsch, University of Duisburg-Essen, Germany

Prof. Silke Schreiber-Barsch, Ph.D., is Professor in adult and further education at University of Duisburg-Essen, Germany. Moreover, she has been appointed as Research Associate at the Centre for Higher and Adult Education, Stellenbosch University, South Africa. Her research interests include international and comparative adult education, lifelong learning, issues of participation and social inclusion/exclusion, global citizenship education, and adult education and disability.

### Co-Moderator: Jessica Kleinschmidt, Helmut Schmidt University Hamburg, Germany

Jessica Kleinschmidt is a Ph.D. student at the Professorship for continuing education and lifelong learning at Helmut Schmidt University/University of the Federal Armed Forces Hamburg. Her expertise lies in occupational continuing education and learning in adulthood from a practical perspective. Her research interests include the transitions of executives within companies.



### Co-Moderator: Lukas Eble, Helmut Schmidt University Hamburg, Germany

Lukas Eble is a researcher at the Professorship for Adult Education at University of Duisburg-Essen. His core expertise are societal-critical and social psychological theories and approaches in Educational Science and Adult Education. His current research focuses on the conceptualisation of solidarity in adult education from the perspective of the philosophy of practice.

## Certification and follow-up

### Participation and teaching certificate

After successfully participating in the Adult Education Academy and completing a transnational essay, students receive a certificate of attendance (12 ECTS). All formally registered students can opt to participate in an examination for receiving a formal transcript including a grade.

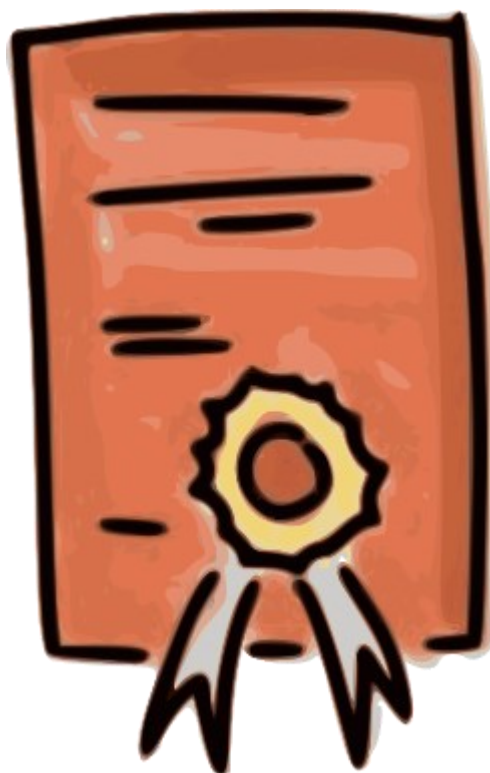
**Participation is considered successfully either if a transnational essay has been submitted and has passed the plagiarism check (master's and doctoral students) or if a good practice presentation has been given during the Academy (practitioners)."**

In addition, students and practitioners must **attend at least 80% of the programme for both weeks** of the Academy to receive a certificate. In exceptional cases, which will be considered individually, it is possible to receive individual certificates for one of the two weeks or a good practice presentation.

Moderators and lecturers receive a teaching certificate on which all events that the person has led are listed, including the comparative groups. People who participate in the Adult Education Academy both as participants and (co-) moderators will of course receive both certificates.

### Publication option

Doctoral students and practitioners have the option to get guidance for publishing a joint comparative paper together with their comparative group moderators after the Adult Education Academy. Further information for those interested in this option will be provided at corresponding events during the Adult Education Academy.





## Join us on social media

# #AEAcademyWue

### LinkedIn Network

The LinkedIn Network for adult education and lifelong learning is one of several features of the annual Adult Education Academy. Our aim is to connect students, researchers, experts and professors interested in adult education and lifelong learning. We offer two LinkedIn groups: an “internal group” and a “professional network”. As a (future) participant with a LinkedIn account, we invite you to join both the internal group and the professional network.



### The “Professional network for adult education and lifelong learning”

As a larger platform, the professional network is an extension of the internal group for professionals, whose jobs, studies or interests link them to adult education and lifelong learning. For this reason, we have set up our public LinkedIn group for participants from all former Adult Education Academies and also for professionals working in the field. Not only will you be able to connect with fellow students and professionals, you will also get information about international conferences, fellowships/scholarships, research projects, recently published papers, calls for papers, professional newsletters, online presentations and, of course, member’s thoughts about various topics in adult education and lifelong learning. This group already has 1000 members from all over the world

### The “Adult Education Academy 2023” group

In addition, each year’s Adult Education Academy has its own internal group to allow students and professors to connect with each other and build their own community, both before and after the Adult Education Academy. Apart from conversations, we also upload Adult Education Academy news and reminders, information and photos. After the Adult Education Academy term, we use the group to share ideas and events related to Adult Education Academy topics. The Adult Education Academy groups are non-public

Join our LinkedIn network

<https://go.uniwue.de/linkedin-network>

Join the LinkedIn group 2023

<https://www.linkedin.com/groups/14105062/>

### The Professorship for Adult and Continuing Education on Social Media

Follow us on Twitter (@EBWuerzburg) so you don’t miss any news regarding our Professorship. Use **#AEAcademyWue** when you tweet about your experiences in relation to the Adult Education Academy! We are looking forward to reading from you.



Follow us on Instagram (@ebwuerzburg)! In addition to the Twitter channel, we post information about the Chair of Adult/Continuing Education on our Instagram account. You can also reach us here for general questions via direct message.

## Travel & Venue



If you arrive by plane, we recommend the airports Nürnberg (NUE) and Frankfurt am Main (FRA). You can take the train (ca. 60 to 90 minutes) to get to Würzburg. When you decide for a transit flight, you might take the train from the cities Munich, Stuttgart, Augsburg and Hannover to Würzburg for your onward journey which is more comfortable and requires less time. If you come from outside Europe, it is better to plan your arrival at Frankfurt am Main. There are ICE-trains which go to Würzburg every hour (Duration ca. 1:30 hours). You can buy train tickets and check for their schedule and delays at the website of the Deutsche Bahn ([www.bahn.de](http://www.bahn.de)). If you fly with Lufthansa, we recommend to book Rail and Fly (around 58 Euro). With this ticket, you are able to take any train to Würzburg. This would help being flexible and avoid waiting times.

If you plan to arrive by bus, you can find various bus schedules at the following website: [www.busradar.com](http://www.busradar.com)

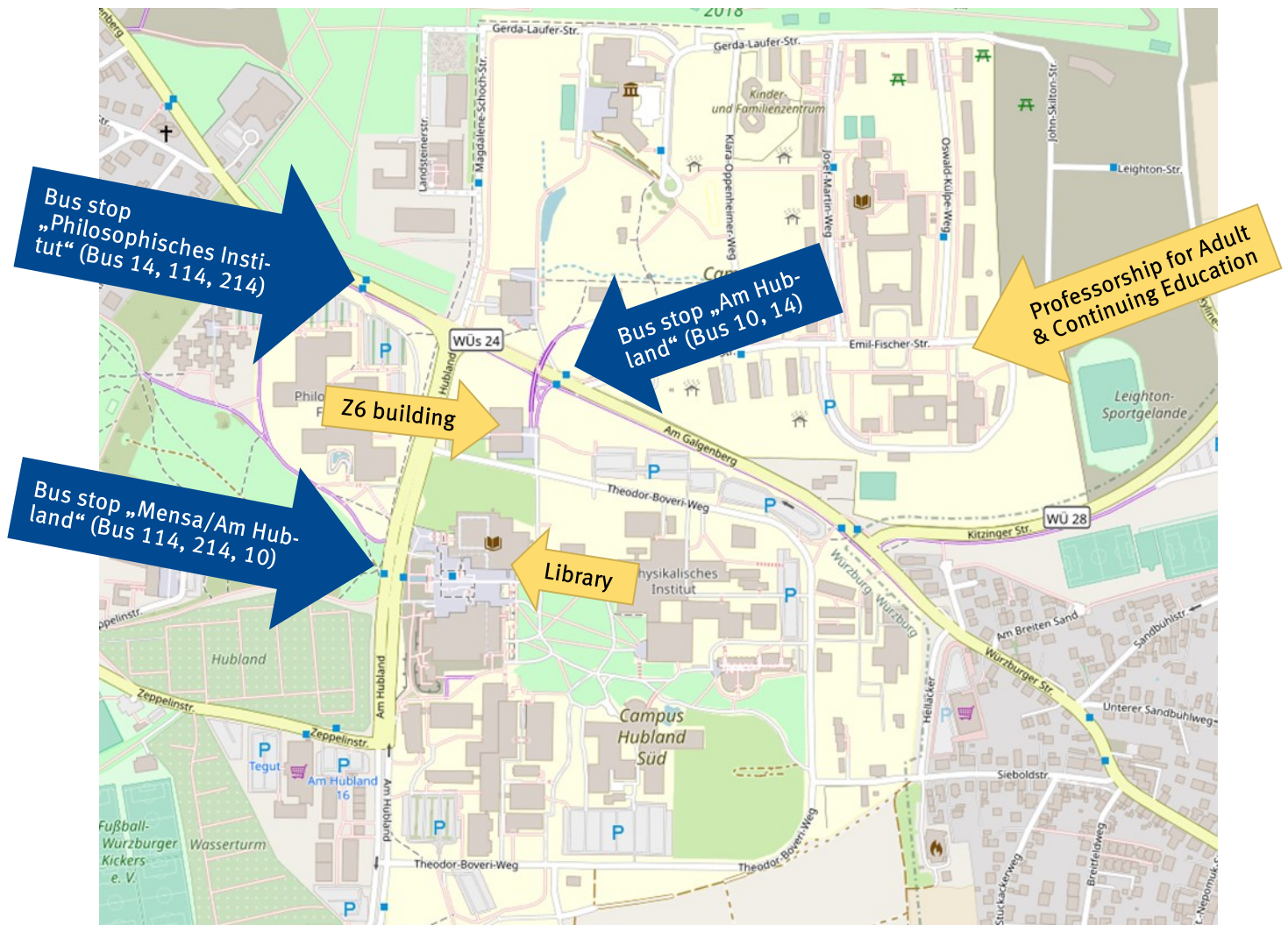


# Travel & Venue



## Venue

Zentrales Hörsaal- und Seminargebäude (Z6)  
University of Würzburg  
Am Hubland  
97074 Würzburg



© OpenStreetMap. This map is made available under the Open Database License: <http://opendatacommons.org/licenses/odbl/1.0/>. Any rights in individual contents of the database are licensed under the Database Contents License: <http://opendatacommons.org/licenses/dbcl/1.0/>

To get to the venue of the event, you can either take bus 10 that departs at “Sanderring” until “Am Hubland”, or bus 14 that departs at “Hauptbahnhof” (main train station) until “Am Hubland”. The duration for both bus connections is approx. 20min. On the right side of the bus stop you can see the building of “Zentrales Hörsaal- und Seminargebäude” (Z6). Furthermore, you can take the bus 114 that departs at “Hauptbahnhof” until “Hubland/Mensa” or bus 214 that departs at “Hauptbahnhof” until “Hubland/Mensa”. From both stops it’s only a few meters until “Zentrales Hörsaal- und Seminargebäude” (Z6 building)

Campus: [wueaddress.uni-wuerzburg.de/search/map?q=Geb.+Z6%2C+Hubland+S%C3%BCD](http://wueaddress.uni-wuerzburg.de/search/map?q=Geb.+Z6%2C+Hubland+S%C3%BCD)

Würzburg: [www.wuerzburg.de/de/weitere-informationen/uebersicht/verkehr/stadtplan/index.html](http://www.wuerzburg.de/de/weitere-informationen/uebersicht/verkehr/stadtplan/index.html)

## Accommodation



The Julius-Maximilian-University holds various hotel cooperation partners that enable you to use a reduced university guest fee. The hotel prices start at 69 EUR per night. In shared bed dorms prices start at 27 EUR per night.

Furthermore, a detailed list of booking recommendations for youth hostels and guest houses in Würzburg will be send to you after your registration. Please consider that we cannot guarantee any free space or the named price. We recommend you to book an accommodation right after your registration.

Vacation apartments as well as B&Bs can be found at the website of Würzburg city:

<http://www.wuerzburg.de/en/visitors/more-acco/index.html>

Hotels can be found at the website of Würzburg city:

<http://www.wuerzburg.de/en/visitors/hotels-hostels/index.html>

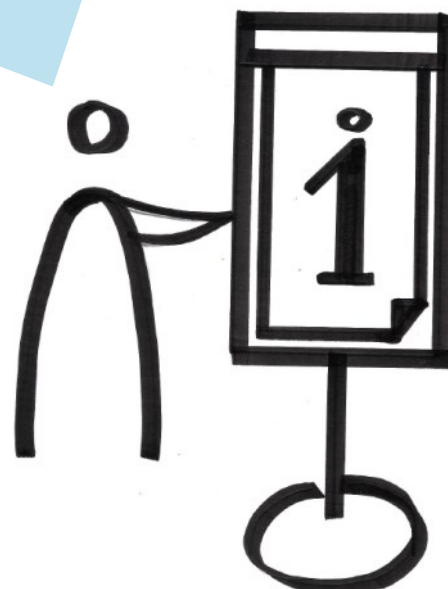
## Regulations regarding Covid-19

Since the pandemic situation and thus the applicable guidelines can change quickly, please visit the websites of the Federal Ministry, the Bavarian government and the University of Würzburg for the latest information.

Here are some websites to refer:

University of Wuerzburg: [www.uni-wuerzburg.de/en/novel-coronavirus](http://www.uni-wuerzburg.de/en/novel-coronavirus)

Bavarian State Ministry of Health and Care: [www.stmgp.bayern.de/coronavirus](http://www.stmgp.bayern.de/coronavirus)



## Which platforms are used?



### Horde Webmail

You can retrieve the e-mail address that you receive from the university (<name.surname>@stud-mail.uni-wuerzburg.de) at any time without a special mail client from the browser.

[Horde :: Anmelden \(uni-wuerzburg.de\)](#)



### Catalogue University Library Würzburg

In the catalogue you will find books and other media that are printed or available electronically from us. At the same time, you can also search many databases and other sources for independent literature, such as articles from magazines. This literature is not always available with us.

[Searching the catalogue - University Library \(uni-wuerzburg.de\)](#)



### WueCampus

WueCampus is the university-wide online learning platform that provides the learning content, the organisation of learning units and learning processes, and serves as a communication platform.

[WueCampus \(uni-wuerzburg.de\)](#)



### WueMahara

Mahara is an e-portfolio software with community functions. The system supports the documentation and reflection of the learning process and the learning outcomes.

[Startseite - Mahara \(uni-wuerzburg.de\)](#)



### WueStudy

WueStudy is the campus management system of the JMU and supports the entire student life cycle for all participants. On the platform you can find application management, student management, course management, event and room management and audit management.

[Startseite - WueStudy \(uni-wuerzburg.de\)](#)



### Zoom

Zoom Meetings is a video conferencing tool with recording and screen sharing features.

[Videokonferenzen, Web-Konferenzen, Webinare, Bildschirmfreigabe - Zoom](#)



# Key

## Groups of people



Master Students



Doctoral Students

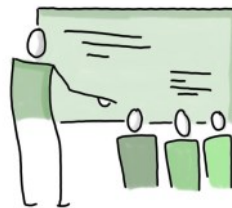


Practitioners

## #AEAcademy phases



Preparatory phase



Week I



Week II



Online mode (Week I)



On campus mode (Week II)

## Activities



Field visit



Good practice presentation



Comparative group presentation

## Team of the Adult Education Academy



***Prof. 'in Dr. Regina Egetenmeyer***

Head of the Professorship for  
Adult and Continuing Education



***Vanessa Beu, M.A.***

Contact for the Adult Education  
Academy programme



***Laura Leibinger, M.A.***

Contact for the Adult Education  
Academy programme



***Julia Saam, M.A.***

Contact for the Adult Education  
Academy programme



***Maren Toepler, M.A.***

Contact for ERASMUS+

### Contact information

Julius-Maximilian University Würzburg  
Institute for Education  
Professorship for Adult and Continuing Education  
Oswald-Külpe-Weg 82  
97074 Würzburg, GERMANY

Phone.: +49 931-3186193  
lifelonglearning@uni-wuerzburg.de  
www.lifelonglearning.uni-wuerzburg.de  
Twitter: EBWuerzburg  
Instagram: ebwuerzburg

### Adult Education Office (during the Academy in february)

Room: Z6, 2.010  
Zentrales Hörsaal- und Seminargebäude (Z6)  
Campus Hubland Süd  
Am Hubland  
97074 Würzburg, GERMANY

**We wish you all the best and stay healthy!**

## Adult Education Academy 2023

International and comparative studies  
in adult education and lifelong learning

All rights reserved.

Julius-Maximilian University Würzburg  
Institute for Education  
Professorship for Adult and Continuing Education  
Oswald-Külpe-Weg 82  
97074 Würzburg, GERMANY  
Tel.: +49 931-31 86193  
[lifelonglearning@uni-wuerzburg.de](mailto:lifelonglearning@uni-wuerzburg.de)  
[www.lifelonglearning.uni-wuerzburg.de](http://www.lifelonglearning.uni-wuerzburg.de)